

## Teledyne Marine Geophysical Instruments

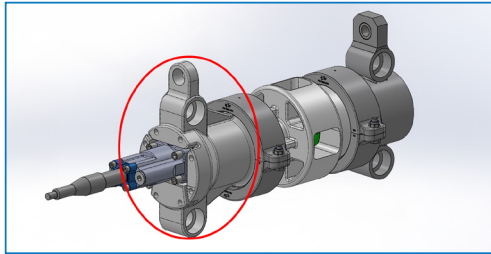
# Bolt 1900 Airgun Advancements

Teledyne Marine Geophysical Instruments is a premier provider of cutting-edge marine technology solutions. Our Bolt product line advances geoscience exploration through its broad array of seismic sources.

## New Offering: Cast Parts for Bolt 1900

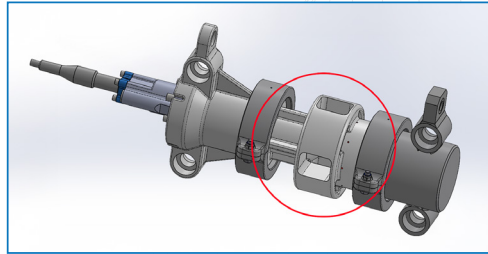
Historically, Bolt 1900 components are machined stainless steel. As part of the Teledyne Continuous Improvement Process, we have developed a new manufacturing technique which utilizes more robust materials and processes. These improvements in no way affect the performance or signal output of the source and maintain the ruggedness and reliability of the design.

The product enhancements are:



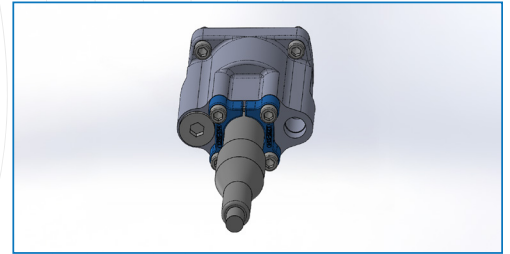
### Top Housings

- Eliminates welded tow ears
  - Includes heavy duty spreader bar ears
- 25% weight reduction
- Increased strength safety margins
- Solenoid valve seating area is recessed to protect sealing surfaces.
- Drop-in replacement for 1900LL-XT



### Main Housings

- 25% weight reduction
- Increased strength safety margins
- Can be manufactured for engineered seals or O-ring seals
- Drop-in replacement for 1900LL-XT



### Solenoid Valve Housing

- Internals are identical to standard valve housing
- Drop-in replacement with pre-existing part numbers and hardware
- Approx 35% lighter in weight



**TELEDYNE  
GEOPHYSICAL INSTRUMENTS**

Everywhere you look™

[www.teledynemarine.com/geophysical](http://www.teledynemarine.com/geophysical)

5825 Chimney Rock Road, Houston, TX 77081

Tel: +1 713 314 3381 | Email: [TMGeophysicalInstruments@teledyne.com](mailto:TMGeophysicalInstruments@teledyne.com)

© Teledyne Marine 2025. Proprietary, all rights reserved. Rev. 05/2025

