

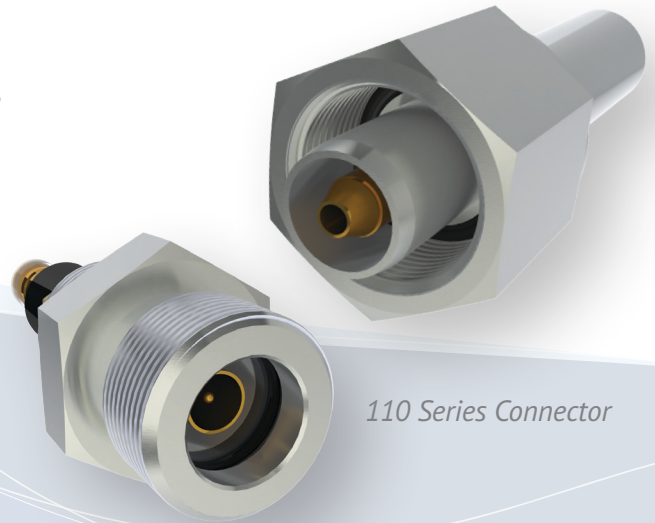
# 110 Series Coaxial Connector

Glass to Metal Sealed coaxial connectors for harsh environments –  
Simple and durable construction

Designed to interconnect 50 ohm coaxial cables in subsea pressure applications for camera systems and instruments used in or around water.

## FEATURES

- Mated receptacles, plugs, and cable assemblies available:
  - Straight plugs
  - Right angle plugs
  - Bulkhead receptacles
  - Inline receptacles
  - Splice receptacles
- Plugs are machined in 316 stainless steel body with a nylon insulator
  - Supplied pre-terminated to the end of a 50 ohm coaxial cable
- Receptacles are machined in 316L stainless steel bodies with a coax element glass sealed directly into the body
- Receptacle body is designed to fit a standard SAE port with a threaded hole and configuration to allow an O-ring around that receptacle base
- Center conductor pin is surrounded by a shield and all components are sealed together in a glass sealing process



110 Series Connector

## ADVANTAGES

- Receptacle contains integral glass to metal seals for maximum protection of your equipment in differential pressure applications rated up to 2000 psig
- Connectors can be used as a two-way configuration as both components serve as conductive paths
- Plugs are supplied pre-terminated using application specific crimp tools, molds and a controlled molding process to make an effective termination
- Consistent performance of this connector series over 45 years with tens of thousands of connectors deployed



# 110 Series Coaxial Connector

Glass to Metal Sealed coaxial connectors for harsh environments

## TECHNICAL SPECIFICATIONS\*

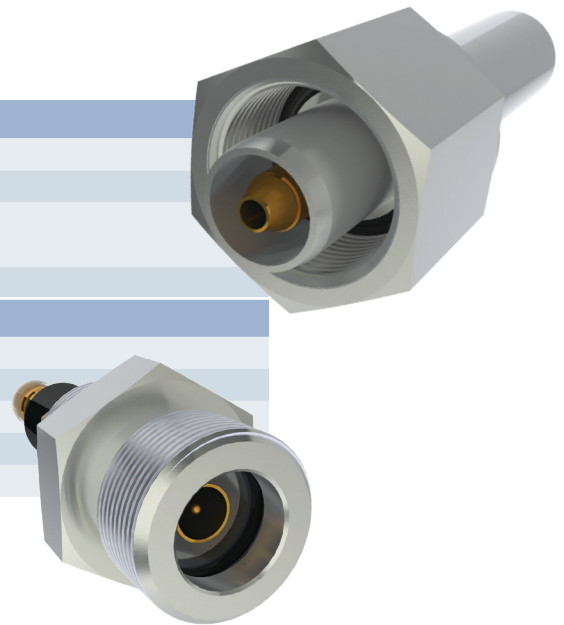
### GENERAL SPECIFICATIONS

Operational Temperature	-40°F to 165°F (-40°C to 74°C)
Storage Temperature	-65°F to 175°F (-54°C to 80°C)
Max Operational Pressure	2,000 psi for molded cable assemblies (~4,500 ft./1,372 m) 10,000 psi (open face receptacle)
Material	316/316L Stainless Steel

### ELECTRICAL SPECIFICATIONS

Operational Current	3 Amps
Max Operating Voltage	1,000 VRMS
Insulation Resistance	5 Ghoms at 500VDC
Frequency Range	0 - 1.5 Ghz
Impedance	50 Ohms

\*Performance values generally based on historical application requirements



## RECOMMENDED CABLES

- For general Use (including shallow water, non-critical applications):
  - Mil-C-17/28 RG-58
- MFor Deep Submergence/Critical Applications:
  - TRC CN-4 (50 ohm)



**TELEDYNE MARINE**  
Everywhereyoulook™

[www.teledynemarine.com](http://www.teledynemarine.com)

1026 N. Williamson Boulevard, Daytona Beach, FL 32114 USA  
Tel +1-386-236-0780 or 1-888-506-2326 • Fax +1-386-236-0906  
Email: [teledynemarine@teledyne.com](mailto:teledynemarine@teledyne.com)