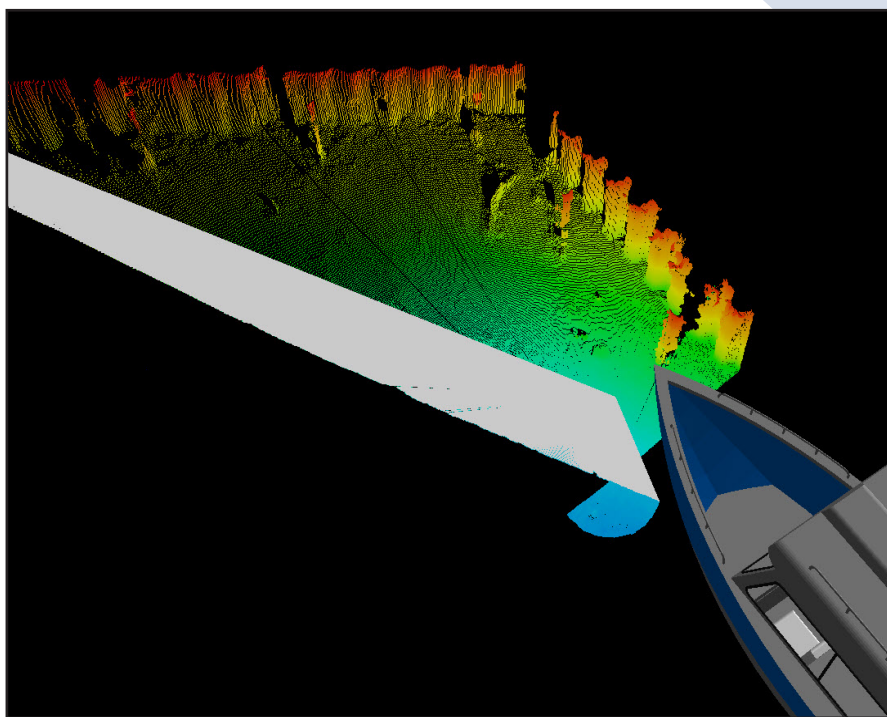
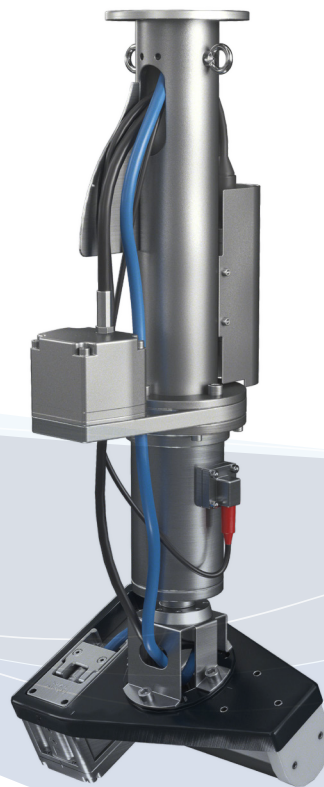


SeaBat[®] T20 MotionScan

Teledyne Marine introduces the new RESON SeaBat T20 MotionScan

The SeaBat T20 MotionScan is a tilted head 350° rotational configuration, based on the renowned and compact SeaBat T20 high-resolution multibeam echo sounder. Installed on a dredge barge the SeaBat T20 MotionScan will, literally at the push of a button, map the work progress in seconds – saving contractors both time and money.

As a part of the modular SeaBat T-series, the T20 MotionScan can also easily be reconfigured to more traditional survey tasks.

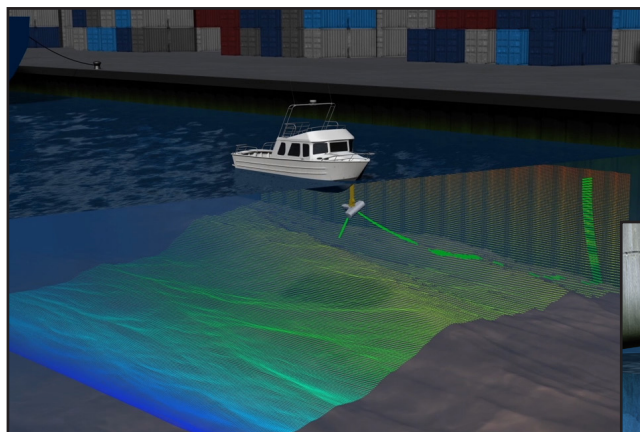


TELEDYNE MARINE
RESON
Everywhereyoulook™

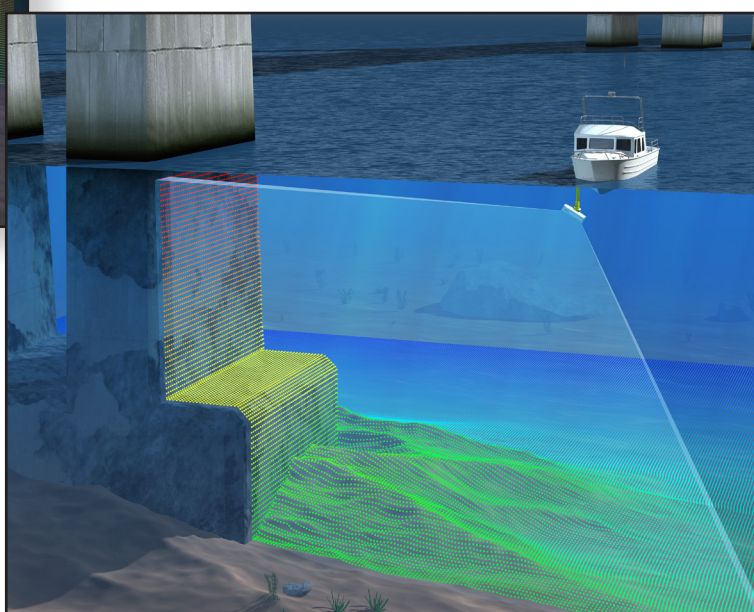
SeaBat® T20 MotionScan

Teledyne Marine introduces the new RESON SeaBat T20 MotionScan

**A new capability delivered as a customized solution
- configured to the customers needs.**



*Sonar head tilted
for scan and
survey mode for
inspection*



SEABAT T20 MOTIONSCAN AT A GLANCE

Rotator head specifications:

- Tilt brackets available in 15°, 25° and 45°
- Resolution approx. 0.1°
- 292mm x 246mm x 137mm
- Weight in air/water approx. 20kg / 12kg

- High precision surveys – require minimal data cleaning and post-processing
- 190-420kHz wide band – flexible for high resolution and long range
- One sonar head 3 operation modes
- Easy to operate
- Including Teledyne PDS – for control, data acquisition and processing

** For MBES specifications refer to T20 product leaflet*

*** MotionScan is configured-to-order, above specifications are indicative only for components*



TELEDYNE MARINE
RESON
Everywhereyoulook™

www.teledynemarine.com/reson

Tel. +45 4738 0022 (Europe) • Tel: +1 805 964 6260 (USA)

Email: reson@teledyne.com