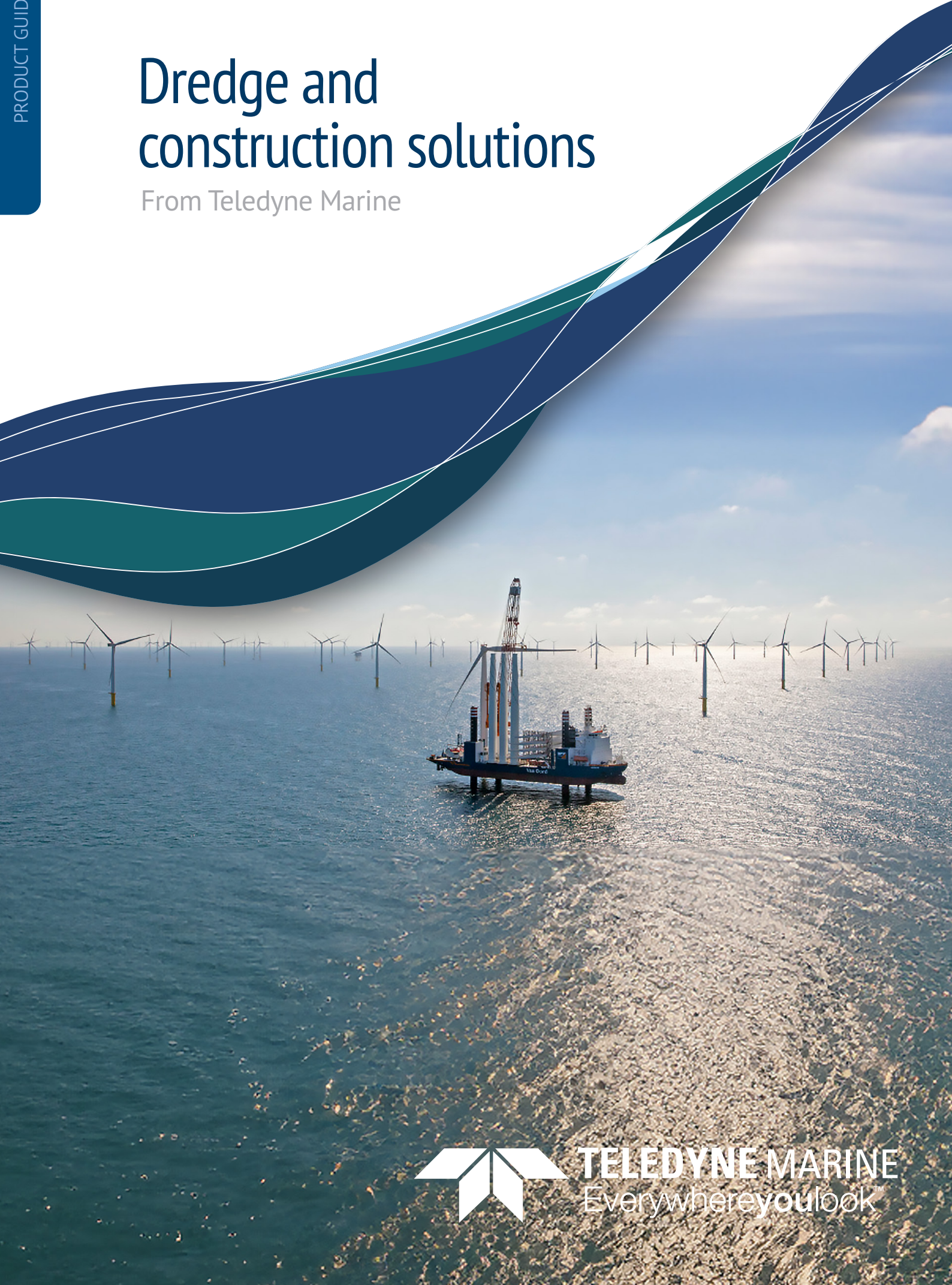




# Dredge and construction solutions

From Teledyne Marine





# Dredge and Construction solutions from Teledyne Marine

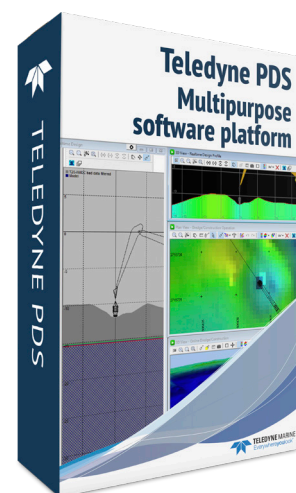
Teledyne Marine provides complete turnkey dredge and construction solutions comprising both hardware and software to monitor the dredging and construction processes. Our client base includes large and small dredging companies, construction companies, hydraulic engineering firms, offshore enterprises, and survey firms. Whether it's for revetment surveys, rock dumping, excavating, dredging, maintenance surveys, building breakwaters, windmill parks, barge management, or any other construction and dredging projects, Teledyne Marine will provide you with a suitable solution.

## We deliver the right solution for your application

When contacting us, we will help you find the right solution for your specific application. With our 30-plus years of market experience, we have developed a diverse selection of solutions. Special applications are tailored to the solution to ensure an easy hands on approach.

## We deliver a complete solution

A solution from Teledyne Marine comprises both sensors and software. Examples of sensors include inclination sensors, angle and multibeam sensors, attitude sensors, multibeam or single-beam sonars, laser scanners, and many more. The core of our solution is the Teledyne PDS software, renowned as the most customizable dredge and construction monitoring software in the market.



## Our solutions are scalable

Our system architecture is entirely modular, allowing you to expand your capabilities as needed. Any of our solutions can be extended to cover additional applications. This flexibility enables you to enhance a Teledyne PDS package you own with additional features to tackle more complex projects.

Examples of complex solutions include standard Teledyne PDS dredge guidance systems with the integration of external equipment not commonly used in dredging activities. For instance, a crane installation integrated with a Laser system for bucket position enhancement, USBL position system to position a fallpipe for placing stones and add a Multibeam system for real-time placement updates. For deepwater projects, it's possible to integrate an underwater crawler with an ROV using a multibeam system, a Blueview FLS and USBL for positioning.

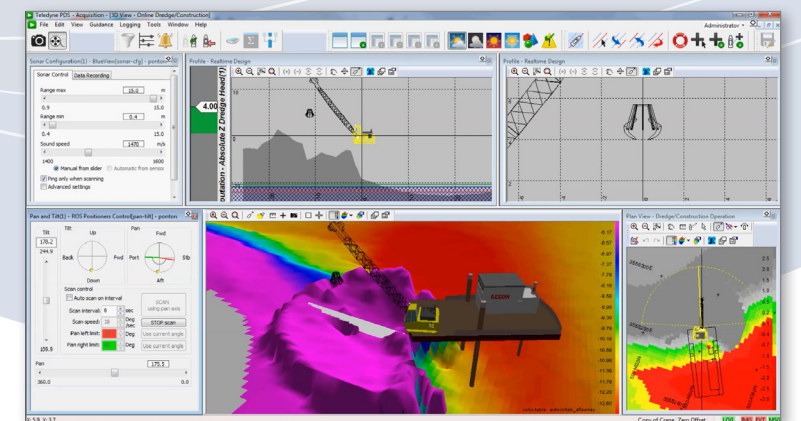
## Visually verify your dredge operations in real-time with our proven sonars

Incorporating a sonar into your dredge guidance system allows you to see in real-time exactly what's happening beneath the dredge during operations. Sonar scans are integrated directly into the PDS display in the cab, providing visual verification of your progress, improving efficiency, and flagging potential dangers even in the murkiest of water.



The Teledyne PDS Software is used to visualize and control the dredge progress in real time directly from the operators cab. Photo credit: McQuade Marine

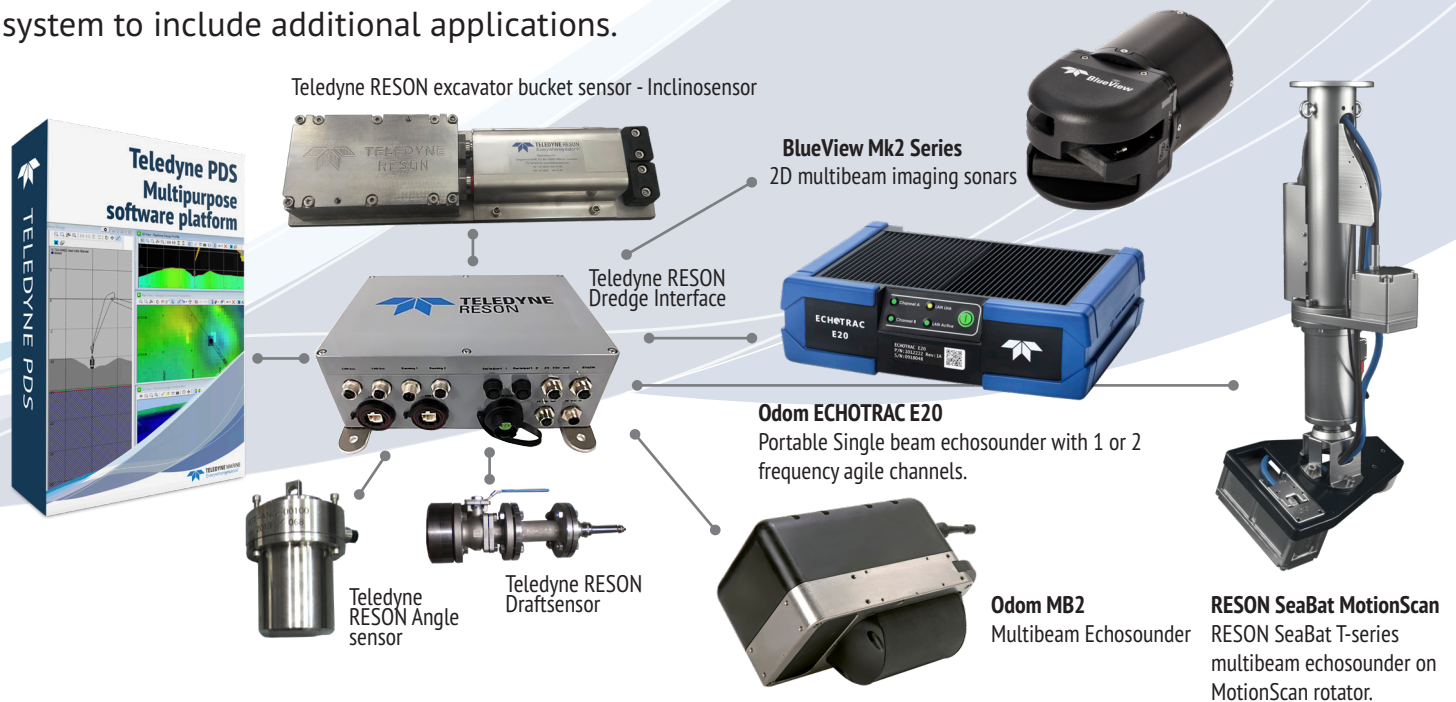
Teledyne Marine offers a full family of sonar solutions designed to fit your unique needs and budget requirements. From real-time verification using our forward looking sonars mounted on the dredge, to single and multibeam solutions for pre and post dredge survey operations, Teledyne Marine delivers the proven, high quality data your daily operations demand.





# The system architecture

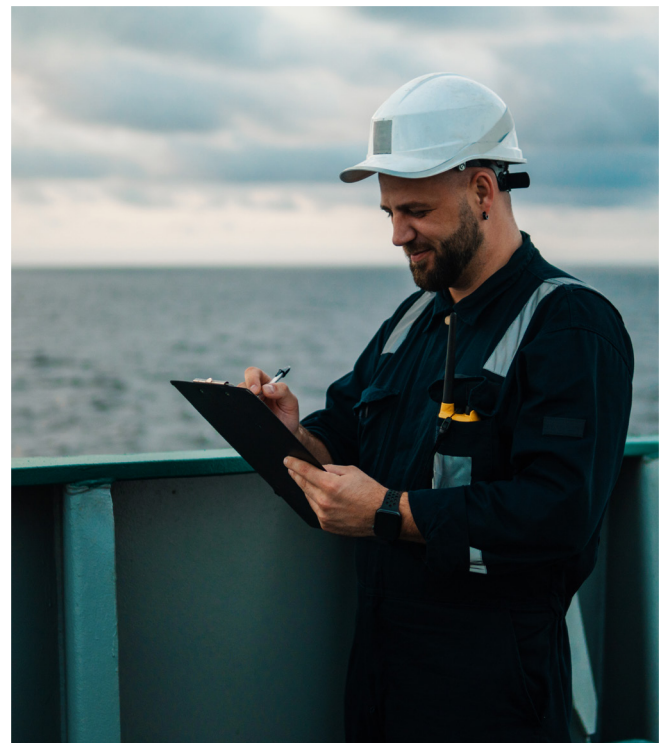
A Teledyne Marine dredge or construction solution consists of a computer running the PDS software connected to our Dredge interface, where all sensors are linked to. The interface allows you to connect an unlimited number of sensors. This is why we can always expand any system to include additional applications.



## We maintain what we deliver

Since we supply all parts of the system, we also provide support and maintenance for these system components. We install and train your people and you use it, and if something breaks, we fix it.

Our team is with you from the start, preparing and testing your system set up in our office to ensure everything is operational before it is shipped. Once on location, they expertly handle your system's installation and calibration, and provide on site training to ensure smooth operations and optimal results.



[www.teledynemarine.com](http://www.teledynemarine.com)

Email: [info@teledynemarine.com](mailto:info@teledynemarine.com)

Specifications subject to change without notice.  
© 2024 Teledyne Marine. All rights reserved. BRS23758-2