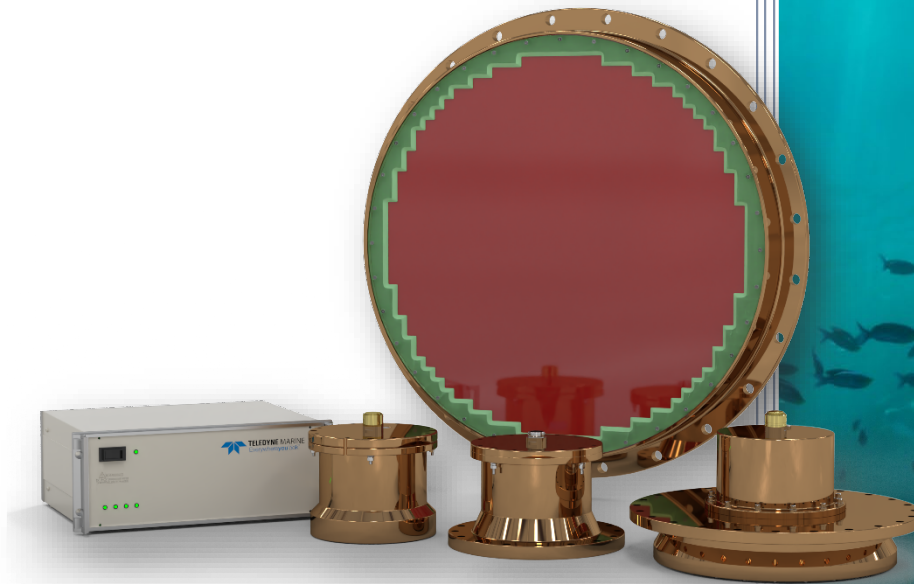


# Ocean Surveyor / Ocean Observer

## INSTALLATION GUIDE



P/N 95A-6019-00 (January 2024)

© 2024 Teledyne RD Instruments, Inc. All rights reserved.



<https://www.teledynemarine.com/rdi>

Use and Disclosure of Data  
Information contained herein is classified as EAR99 under the U.S. Export Administration Regulations. Export, reexport or diversion contrary to U.S. law is prohibited.



## TABLE OF CONTENTS

<b>CHAPTER 1 - AT A GLANCE</b> .....	<b>1</b>
Introduction .....	2
Ocean Surveyor/Observer Overview.....	2
Power Considerations .....	3
Computer Considerations .....	4
Electronics Chassis Considerations.....	4
Cabling Considerations.....	5
I/O Cable Identification .....	7
Transducer Dry Connector Resistance Check.....	8
Navigation Interface Considerations.....	11
Using Trigger-In and Trigger-Out.....	11
Installation Overview .....	12
Alignment Overview.....	15
<b>CHAPTER 2 – TRANSDUCER INSTALLATION</b> .....	<b>16</b>
Transducer Mounting Considerations.....	17
Location.....	17
Orientation.....	17
Other Considerations .....	17
Floating Objects .....	17
Acoustic Window .....	18
Sea Chest.....	18
Fairing.....	18
Air Bubbles .....	18
Flow Noise.....	18
Corrosion and Cathodic Disbondment .....	19
Ringing.....	19
Acoustic Isolation .....	19
Maintenance .....	20
<b>CHAPTER 3 - USING ACOUSTIC WINDOWS</b> .....	<b>21</b>
Acoustic Window Overview .....	22
Background - Should I use an Acoustic Window? .....	22
Advantages .....	22
Disadvantages.....	22
What Window should I use? .....	23
Are there any Other Windows that I can consider? .....	25
Acoustic Window Installation.....	26
What should the Window Shape be? .....	26
Can I Add Strengthening to the Window?.....	26
How do I Secure the Window to the Well Opening?.....	26
How to Prevent the Window from Cracking When Going Into Dry Dock? .....	27
How Much Space should I Have between the Window and Transducer?.....	28
What Other Issues should be Considered When Using an Acoustic Window? .....	29
What Fluid Should I Fill the Sea Chest With? .....	29
How Much Fluid Should I Use in the Sea Chest? .....	29
Should I Use Absorption Material When Using a Window? .....	29
Do I Need to Worry About Corrosion When Using a Window?.....	30
Do I Need to Worry About Air Bubbles When Using a Window? .....	30
Do windows Improve Flow Noise Problems? .....	30
What Maintenance is required when using Windows? .....	31
How Often Should I Inspect the Window? .....	31
If I find that the Window is Damaged Can I Keep Operating the ADCP? .....	31
Does the Use of a Window Effect My Warranty?.....	31

Insertion Loss .....	32
Conceptual Transducer Well Design .....	38
<b>CHAPTER 4 - SPECIFICATIONS .....</b>	<b>44</b>
Specification Overview .....	45
Water Velocity Specifications.....	46
Profile Parameters .....	46
Bottom Track Specifications.....	47
Echo Intensity Profile .....	47
Transducer and Hardware Specifications.....	48
Internal Sensors .....	48
System Power Specifications.....	49
Environmental Specifications.....	49
Outline Installation Drawings.....	50
Ocean Surveyor/Observer Electronics Chassis - 96A-6000 .....	51
Ocean Surveyor/Observer 38 kHz – 96A-6009.....	52
Ocean Surveyor/Observer 75 kHz - 96A-6007 .....	53
Ocean Surveyor/Observer 75 kHz, Wide Flange - 96A-6011.....	54
Ocean Surveyor/Observer 150 kHz - 96A-6018 .....	55
Ocean Surveyor/Observer 150 kHz, Flanged – 96A-6019 .....	56
<b>APPENDIX A - DRY CONNECTOR INSTALLATION.....</b>	<b>57</b>
Dry Connector Installation Overview .....	58
Installation Instructions .....	59
Checking the Wiring.....	62

## LIST OF FIGURES

Figure 1.	I/O Cable Connector Configurations .....	5
Figure 2.	Typical Ocean Surveyor/Observer Interface Cable Layout (Overview) .....	6
Figure 3.	Typical Ocean Surveyor/Observer Interface Cable Layout (Detail View) .....	7
Figure 4.	OS2 versus an OS1 I/O Cable Wet-End Connector (Wire Side View).....	7
Figure 5.	End-Cap Pin-Out and Internal I/O Cable Wiring .....	8
Figure 6.	I/O Cable Wiring (73A-6010) .....	10
Figure 7.	Check for O-Ring Installation on Cable and End-Cap.....	13
Figure 8.	Transducer Misalignment Reference Points.....	15
Figure 9.	Conceptual Drawing of an Acoustic Window with Mounting Ring.....	27
Figure 10.	Location of the Window Bolt Hole Circle Diameter.....	27
Figure 11.	Ideal Drain Hole Locations.....	28
Figure 12.	38 kHz Insertion Loss (one-way) with a 19.1mm window at 0°C.....	32
Figure 13.	38 kHz Insertion Loss (one-way) with a 38.1mm window at 0°C.....	33
Figure 14.	75 kHz Insertion Loss (one-way) with a 9.5mm window at 0°C.....	33
Figure 15.	75 kHz Insertion Loss (one-way) with a 9.5mm window at 0°C.....	34
Figure 16.	75 kHz Insertion Loss (one-way) with a 19.1mm window at 0°C.....	34
Figure 17.	75 kHz Insertion Loss (one-way) with a 19.1mm window at 0°C.....	35
Figure 18.	150 kHz Insertion Loss (one-way) with a 9.5mm window at 0°C.....	35
Figure 19.	150 kHz Insertion Loss (one-way) with a 9.5mm window at 0°C.....	36
Figure 20.	150 kHz Insertion Loss (one-way) with a 19.1mm window at 0°C.....	36
Figure 21.	150 kHz Insertion Loss (one-way) with a 19.1mm window at 0°C.....	37
Figure 22.	Inside Vessel Mounting - OS 38 kHz Transducer .....	38
Figure 23.	Underneath Vessel Mounting - OS 38 kHz Transducer.....	39
Figure 24.	Inside Vessel Mounting - OS 75 kHz Transducer .....	40
Figure 25.	Underneath Vessel Mounting - OS 75 kHz Transducer.....	41
Figure 26.	Inside Vessel Mounting - OS 150 kHz Flanged Transducer.....	42
Figure 27.	Underneath Vessel Mounting - OS 150 kHz Flanged Transducer .....	43

**LIST OF TABLES**

Table 1. Ocean Surveyor/Ocean Observer Electronics Chassis Power .....3  
 Table 2. Ocean Surveyor/Ocean Observer Transducer Power Requirements .....3  
 Table 3: Transducer Dry Connector Resistance Check .....9  
 Table 4: Trigger-In Input/Output Signals.....11  
 Table 5: Expected Loss for ADCPs with 30Degree Beam Angle.....23  
 Table 6: Expected Loss for ADCPs with 20Degree Beam Angle.....24  
 Table 7: Wavelength of sound in seawater (1500 m/s sound speed) .....29  
 Table 8: Water Profiling – Long Range Mode.....46  
 Table 9: Water Profiling – High Precision Mode .....46  
 Table 10: Water Profile Maximum Ping Rate .....47  
 Table 11: Maximum Bottom Track Altitude .....47  
 Table 12. Ocean Surveyor/Ocean Observer Electronics Chassis Power.....49  
 Table 13. Ocean Surveyor/Ocean Observer Transducer Power Requirements .....49  
 Table 14: Outline Installation Drawings .....50

**REVISION HISTORY**

January 2024

- Added the P2 wire side view to Figure 6. I/O Cable Wiring (73A-6010).

November 2023

- Changed Figure 24 and 25, page 40 and 41 from 25.4mm to 19.1 mm for the maximum thickness.

July 2023

- Updated website address.

January 2023

- Deployment guide now download only.
- Updated outline installation drawing 96A-6000.
- Updated EAR statement.

October 2021

- Removed Chapter 4 Gyrocompass Interface – no longer sold.

December 2020

- Added information on the water-blocked cable to the Cabling Considerations section.
- Corrected Figure 1 and non-water blocked cable OD.
- Added the Transducer Dry Connector Resistance Check.
- Changed recommended anti-freeze from Ethylene Glycol to Propylene Glycol.

April 2018

- Corrected system overview power specifications on page 3
- Updated outline Installation drawings

- Added Export Administration Regulations (EAR) to cover page and footers

April 2014

- Updated specifications

December 2012

- Updated revision date to match operation manual

August 2012

- Updated styles and fonts.
- Added corrections from ICN102 (150 kHz Conceptual Well Design did not show the current flanged design of the transducer).
- Added corrections from ICN123 (updated the storage and operating temperature specifications).
- Added corrections from ICN138 (The 96A-6009 outline installation drawing did not specify the lifting bolt holes or the Beam 3 notch).
- Added corrections from ICN139 (updated the 96A-6018 and 96A-6019 outline installation drawings for the 150 kHz systems).
- Added correction to I/O cable diameter.
- Updated Dry Connector Installation.

#### EXCLUSIONS AND OMISSIONS

1: None

## HOW TO CONTACT TELEDYNE RDI INSTRUMENTS

If you have technical issues or questions involving a specific application or deployment with your instrument, contact our Field Service group:

Teledyne RD Instruments	Teledyne RD Instruments Europe
14020 Stowe Drive Poway, California 92064	2A Les Nertieres 5 Avenue Hector Pintus 06610 La Gaude, France
Phone +1 (858) 842-2600	Phone +33(0) 492-110-930
Sales – <a href="mailto:rdisales@teledyne.com">rdisales@teledyne.com</a>	Sales – <a href="mailto:rdie@teledyne.com">rdie@teledyne.com</a>
Field Service – <a href="mailto:rdifs@teledyne.com">rdifs@teledyne.com</a>	Field Service – <a href="mailto:rdiefs@teledyne.com">rdiefs@teledyne.com</a>

Client Services Administration – [rdicsadmin@teledyne.com](mailto:rdicsadmin@teledyne.com)

Web: <https://www.teledynemarine.com>

For all your customer service needs including our emergency 24/7 technical support, call +1 (858) 842-2700

### Self-Service Customer Portal

Use our online customer portal at <https://www.teledynemarine.com/support/RDI/technical-manuals> to download manuals or other Teledyne RDI documentation.

### Teledyne Marine Software Portal

Teledyne RD Instruments Firmware, software, and Field Service Bulletins can be accessed only via our Teledyne Marine software portal.

To register, please go to <https://tm-portal.force.com/TMsoftwareportal> to set up your customer support account. After your account is approved, you will receive an e-mail with a link to set up your log in credentials to access the portal (this can take up to 24 hours).

Once you have secured an account, use the Teledyne Marine software portal to access this data with your unique username and password.

If you have an urgent need, please call our Technical Support hotline at +1-858-842-2700.

NOTES



# Chapter 1

## AT A GLANCE



In this chapter, you will learn:

- System overview
- Installation overview
- Alignment overview

# Introduction

This guide is a guide for installing a Teledyne RD Instruments (TRDI) Ocean Surveyor/Observer Acoustic Doppler Current Profiler (ADCP) aboard a vessel (ship) or platform. Use this guide to plan your installation layout. You also can use this guide to see what requirements you must consider before purchasing an ADCP. TRDI recommends you distribute this book to your organization's decision-makers and installation engineers.

TRDI is not an expert in installing the ADCP aboard a ship. There are too many installation methods. We suggest you seek expert advice in this area because of its importance in ADCP performance. However, we can give you information about how others have installed their systems. In return, we do appreciate receiving information about your installation and the results.

## Ocean Surveyor/Observer Overview

The standard Ocean Surveyor/Observer is an AC-powered, two-part unit. It consists of a bronze transducer assembly mounted in the ship's hull and an electronics chassis you can place in the ship's lab. Several options are available.

### The basic system includes:

- Transducer assembly - Contains the transducer ceramics and electronics. Standard acoustic frequencies are 38, 75, and 150 kHz. See the [outline drawings](#) for dimensions and weights.
- Electronics chassis - Contains the processing electronics.
- Maintenance kit - Contains spare parts and basic tools needed for routine maintenance.
- Ocean Surveyor/Observer technical manual and deployment guide.
- Waterproof dummy plug.
- *VmDas* Software - Controls the ADCP and displays its data through a Windows compatible computer.
- Utilities software - Several programs to help you view data (*WinADCP*) and talk directly to the ADCP and other utility programs (*TRDI Toolz*).

### Standard options include:

- Input/Output (I/O) cables and connectors (length determined by customer).

## Power Considerations

The Ocean Surveyor/Observer uses 1600 watts of peak power. Teledyne RD Instruments recommends using a UPS system with a rated output power of at least 2400 watts.

All Ocean Surveyor/Observer ADCPs draw the same amount of peak current and inrush current (power up current draw). They will also draw the same average power assuming that they are setup the same.

There is no frequency dependence on the power requirement. All Ocean Surveyor/Observer ADCP frequencies (38, 75, and 150) use the same amount of peak power, 1600 Watts. The only difference is the duration that they draw the peak power.

Here are the power specifications for all Ocean Surveyor/Observer ADCPs:

**Table 1. Ocean Surveyor/Ocean Observer Electronics Chassis Power**

Electronics Chassis Input Voltage	90-120VAC or 220-240VAC, 47-63Hz
Electronics Chassis Output Voltage	48VDC 50Amps Max
Input Power (between transmit)	60W Typical
Input Current @ 230VAC	<34Amps rms
Ride through time	20ms
Transient Surge	EN/IEC 1000-4-2 Level 4
Common mode & normal mode	EN/IEC 1000-4-5 Level 3

Recommended UPS 3200Watts (2200Watts Minimum)

**Table 2. Ocean Surveyor/Ocean Observer Transducer Power Requirements**

ADCP Input Voltage	24-48VDC (48VDC Typical)
Power	1600W peak
Inrush Current	<46A
Transmit Power	1100W typical
Standby Power	2W

To decide which UPS system to use you must be able to handle more power than the maximum (peak) power that will be needed to operate the Ocean Surveyor/Observer ADCP. This means you do not want to use a UPS system that only provides 1600W, it must provide more than this.

To determine the acceptable requirements for a UPS, you must determine the derating factor you will use. The recommended derating factor is 50% and the minimum derating factor you would use is 75%. Using the recommended derating factor (50%) means that you need a UPS capable of supplying 3200 Watts. If you use the minimum derating factor, then you would use a UPS capable of supplying 2133 Watts.

The UPS must be able to handle the inrush current as well. Inrush current is the current required to fully charge up the power supply when power is applied to the electronic chassis. This is particularly true for cases where the system is supplied with 230VAC, as the inrush current is as high as 34 Amps rms. If the UPS limits the current, then the power on cycle will take longer. You do not want the UPS to shut down during the inrush current draw, as this may not allow the Ocean Surveyor/Observer ADCP electronics to start.



TRDI recommends a dedicated AC circuit protected by a 20 Amp (115 VAC) or 40 Amp (230 VAC) circuit breaker.

One UPS used by a customer provided 2400 Watts, which provides a derating factor of 67%. This is basically halfway between the minimum derating factor and the recommended derating factor. This UPS provided adequate power for the OS38 and appeared to not be pushing the UPS beyond a reasonable safety point. Therefore, a UPS system providing 2400 Watts is Teledyne RD Instrument's recommendation for all Ocean Surveyor/Observer and Ocean Observer ADCPs.

## Computer Considerations

TRDI designed the Ocean Surveyor/Observer system to use a Windows® compatible computer. The computer controls the ADCP and displays its data, usually through our *VmDas* program.



It is highly recommended that you download and install all the critical updates, recommended updates, and the service releases for the version of Windows® that you are using prior to installing any TRDI software.

*VmDas* requires:

- Windows® 10, 8.1, 7, or XP
- Pentium III 600 MHz class PC (higher recommended)
- 1GB of RAM (2GB or more RAM recommended)
- 50 MB Free Disk Space plus space for data files (A large, fast hard disk is recommended)
- Minimum of one serial port; number of ports is dependent on the application. *VmDas* can use up to six serial ports in some configurations (High Speed Serial Ports recommended).
- Minimum display resolution of 1024 x 600, 768 color
- Mouse or other pointing device
- An Ethernet card if network I/O is desired

The computer configuration varies depending of the number of communication ports and the external data refresh rate. Serial communications require a lot of processor resources, and the minimum requirements can vary. A good quality video card is required to operate *VmDas* and *WinADCP* simultaneously. We do not use graphic card 3D functions, however, video memory is needed to display all graphics.

However, with experience we can recommend that:

- If you are using more than two communication ports, you should not use a Celeron processor.
- Intel Pentium III processors work best to operate the ADCP and give access to display and keyboard without losing ensembles.

## Electronics Chassis Considerations

Place the electronics chassis (see [Outline Installation Drawings](#)) where there is access to the I/O cable, host computer, and navigation interface cable. You can place the rack-mountable chassis in a standard 19-inch cabinet. The chassis needs 90 to 260 VAC to operate (see [Power Considerations](#)). Allow enough room around the chassis for access, ventilation, and isolation from electronic and magnetic interference.



Do not place the electronic chassis within three feet of a computer monitor. Monitors are a major source of electronic interference.

## Cabling Considerations

Several cables connect to the Ocean Surveyor/Observer system (Figure 2 and Figure 3). Use care when routing these cables through bulkheads, deck plates, cable runs, and watertight spaces. Make allowances in cable length and engineering design plans for cable routing. When necessary, use strain reliefs on the cables.

The Input/Output (I/O) cable (Figure 1 and Figure 6) connecting the transducer assembly to the electronics chassis has the following specifications.

73A-6010-xxx Cable specifications non-blocked (default cable for Ocean Surveyors):

- Minimum bend radius = 203 mm (8.0 in.)
- Typical cable OD = 19.812 mm  $\pm$  3.048 mm (0.780  $\pm$  0.12 in.)
- Maximum pull load = 3432.3 N (771.6 lb.)
- Breaking Strength = 4448.3 N (1000 lb.)
- Maximum length = 100 m (328 ft.)
- Available with either ends having straight or angled connectors or a combination thereof. The transducer-end connector is molded on, so you can use it below the waterline.

73A-6038-xxx Cable specifications water blocked (default cable for Ocean Observers/Rigs):

- Minimum bend radius = 203 mm (8.0 in.)
- Typical cable OD = 21.59 mm  $\pm$  3.048 mm (0.850 in.  $\pm$  0.12 in.)
- Maximum pull load = 3432.3 N (771.6 lb.)
- Breaking Strength = 4448.3 N (1000 lb.)
- Maximum length = 100 m (328 ft.)
- Available with either ends having straight or angled connectors or a combination thereof. The transducer-end connector is molded on, so you can use it below the waterline.



The I/O connector on the transducer uses a 2-020 O-ring and the I/O cable (wet end) uses a 2-022 O-ring. **Always check that both O-rings are in place when connecting the I/O cable to the transducer.** The 2-022 O-ring has a tendency to fall out if the cable connector is dropped. **If either of these O-rings are missing or damaged, the transducer will flood.**

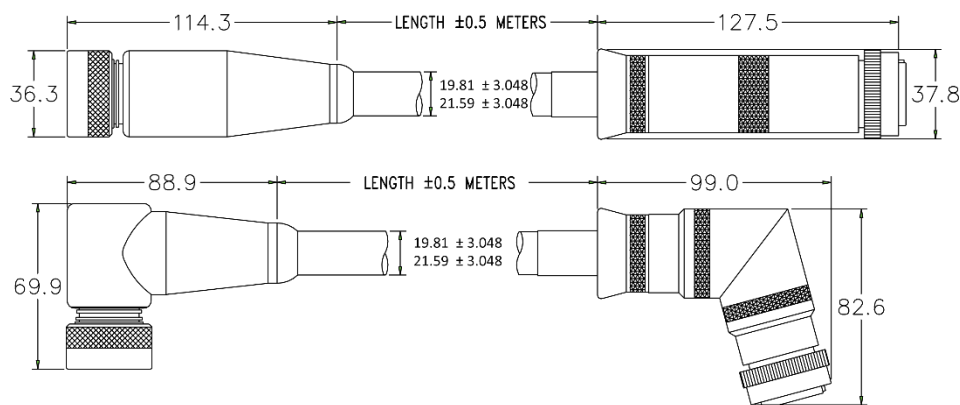


Figure 1. I/O Cable Connector Configurations

**Route this cable so:**

- You can install it with the connectors attached.
- It does not have kinks or sharp bends.
- You can easily replace it if it fails.

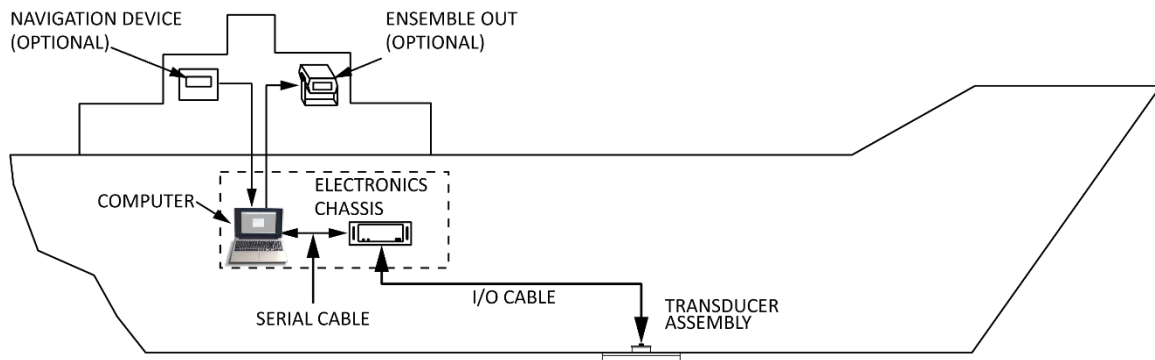


You can order the cable with the chassis-end connector removed. This allows easier cable routing, but requires you to assemble the cable connections at your installation site (see [Dry Connector Installation](#)). This is a difficult task.

Other cables that may need routing to the chassis include the computer serial interface, and Trigger In/Out. Other cables that may need routing to the computer include the navigation interface and the remote display interface.

**To connect the I/O cable:**

1. Verify the O-ring on the end-cap connector (2-020) and the wet end of the cable (2-022) are both installed.
2. Rotate the cable connector to align the key and pins and then insert it into the receptacle.
3. Push straight in to fully seat the connector.
4. Thread the coupling ring onto the receptacle to complete the connection.



**Figure 2. Typical Ocean Surveyor/Observer Interface Cable Layout (Overview)**

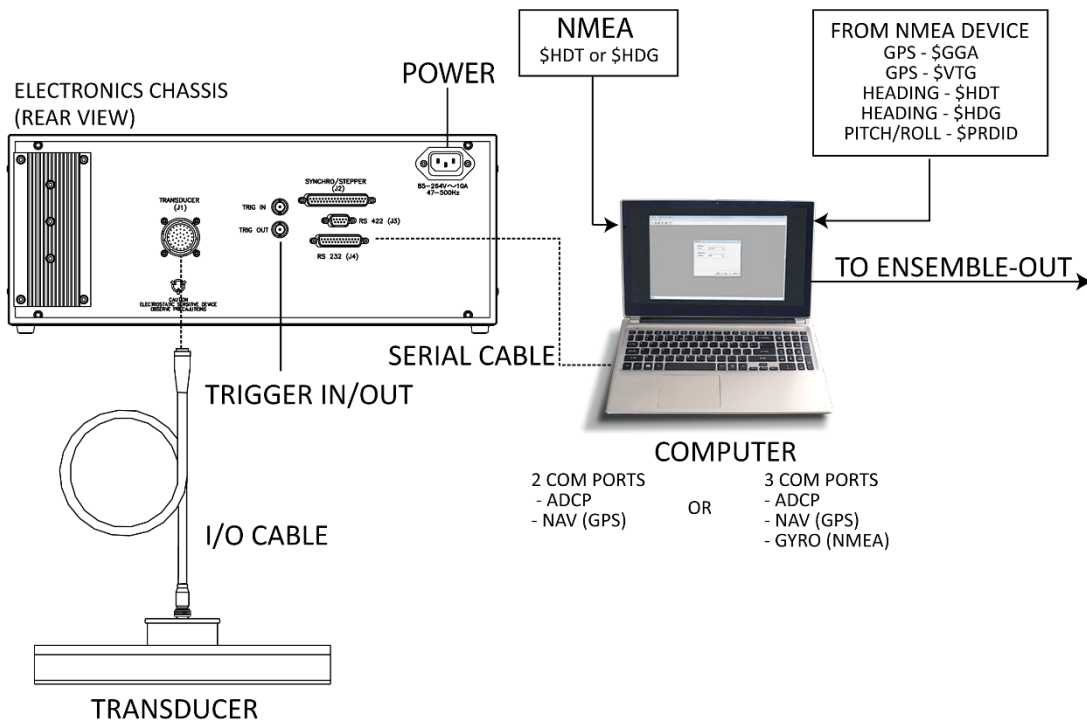


Figure 3. Typical Ocean Surveyor/Observer Interface Cable Layout (Detail View)

## I/O Cable Identification

Both the OS1 and OS2 Ocean Surveyor/Observer I/O cables use the same raw cable (97A-6002-00). Additionally, the dry end connectors are exactly the same on the OS1 and OS2 cables. The only external difference is the wet end connectors. These are different on the OS1 and OS2 cables. Internally the cables are wired differently. If you are in doubt about what cable to use, use Figure 4 to identify the OS2 cable.

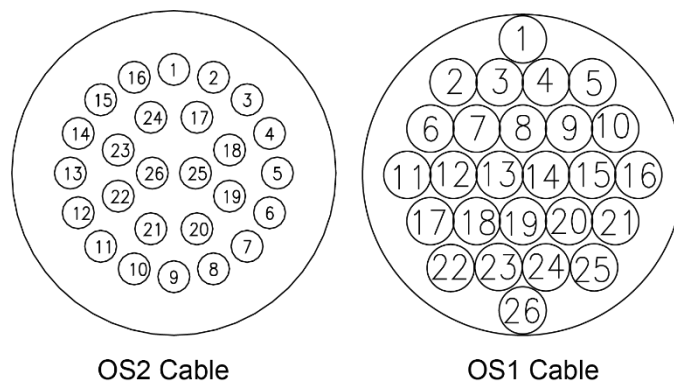


Figure 4. OS2 versus an OS1 I/O Cable Wet-End Connector (Wire Side View)

# Transducer Dry Connector Resistance Check

When only the dry-side connector P2 (Electronics Chassis connector) is accessible and the transducer is connected to the underwater connector P1 (Transducer connector), use Table 3 for a coarse check of the transducer cable's integrity.

Verify the pin-to-pin connections as indicated in the schematic; each connection should have continuity, where the resistance should nominally be 0.033 Ohms per meter of cable length at 20 °C (i.e., a 30 meter cable has a nominal conductor resistance of 1 Ohm at 20 °C). The isolation resistance between conductors, and conductors and shields should be at least 20 MOhm at 100 VDC. Note that if moisture is present you may not be able to obtain this isolation resistance. Use a DMM for measuring the resistance.



Do NOT use a Hi-Pot Tester for measuring the resistance values, as serious damage to the transducer electronics will be the result.



You must observe anti-static precautions for this test since the cable is connected to the transducer.



When the transducer cable is connected to the transducer, you are not able to differentiate between a problem that may exist in the cable or the transducer. That is, if you measure an open connection, the open may be in the cable or the transducer.



Table 3 is valid for an Ocean Surveyor/Ocean Observer Transducer connected and a 30-meter cable length. Other cable lengths may be interpolated. Resistance values are valid at 20 °C.

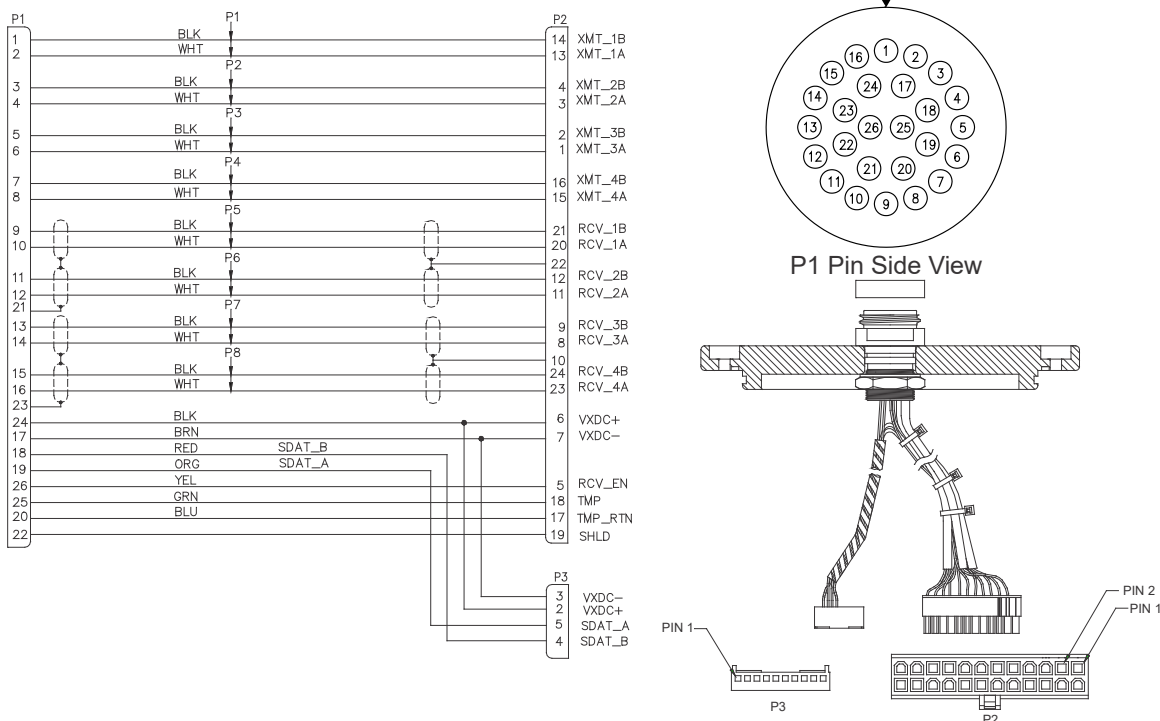


Figure 5. End-Cap Pin-Out and Internal I/O Cable Wiring



**Table 3: Transducer Dry Connector Resistance Check**

Description	Cable Dry Connector		Resistance	Your Readings
	From	To		
BEAM 1 XMIT to XMIT RTN (see note 8)	A	W	> 1.5 Mohms	
BEAM 2 XMIT to XMIT RTN (see note 8)	D	C	> 1.5 Mohms	
BEAM 3 XMIT to XMIT RTN (see note 8)	G	F	> 1.5 Mohms	
BEAM 4 XMIT to XMIT RTN (see note 8)	K	J	> 1.5 Mohms	
BEAM 1 RCV HI to BEAM 1 RCV LOW (see note 10)	e	M	< 15 ohms	
BEAM 2 RCV HI to BEAM 2 RCV LOW (see note 10)	f	N	< 15 ohms	
BEAM 3 RCV HI to BEAM 3 RCV LOW (see note 10)	g	P	< 15 ohms	
BEAM 4 RCV HI to BEAM 4 RCV LOW (see note 10)	h	R	< 15 ohms	
SHIELD to SHIELD	d	q	< 5 ohms	
SHIELD to SHIELD	r	s	< 5 ohms	
SHIELD to SHIELD	d	r	> 20 Mohms	
RCV ENABLE to VXDC GND (see note 9)	S	T	4.75 or 99 kohms	
TEMP to TEMP RTN	i	j	11.3 kohms	
VXDC to VXDC GND (see note 6)	U	T	Diode Check Reverse Bias ----- Forward Bias	
SDAT B to VXDC GND (see note 7)	k	T	5.9 kohms	
SDAT A to VXDC GND (see note 7)	m	T	> 20 Mohms	
SHIELD to ALL	B	ALL	> 20 Mohms	
SHIELD to ALL	E	ALL	> 20 Mohms	
SHIELD to ALL	H	ALL	> 20 Mohms	
SHIELD to ALL	V	ALL	> 20 Mohms	

Troubleshooting Tips:

1. N/A = Not applicable, no check possible.
2. Some meters will read as OPEN or overload (OL) for resistances greater than 2Mohms. In most cases this is a pass. TRDI recommends using a multi-meter that will measure up to 20 MΩ.
3. If the TCM2 voltages are not present, the compass will not work, and the system will not operate in high gain mode. Therefore, the system will still collect valid data, but the profiling range will be greatly reduced.
4. If any one of the transmit wires are not correct, then the system will NOT function correctly, and MUST be repaired before accurate current data can be collected.
5. If one of the receive wires are not correct, then depending on the failure the system may still be able to function properly with 3 beam solutions.
6. VXDC to VXDC GND - This check needs to be done with the multi-meter in the diode check mode.  
Connect the meter's positive lead to VXDC GND, and the negative lead to VXDC (reverse bias).  
a) Measure a diode drop of ~0.6 VDC, or an overload (OL), depending on the Beamformer assembly version.  
b) Reverse the leads (forward bias) and measure ~ 1.9 VDC.
7. SDATA and SDATB measurements only apply to Ocean Observer systems that have internal TCM2 compasses.
8. Each transmit pair resistance must be greater than 1.5 MΩ, and within 2 MΩ of the resistances on the other three transmit pairs.
9. Measure a resistance of 4.75 K or 99 K, depending on the Beamformer assembly version.
10. OO/OS 38 kHz receive pairs must be < 29Ω. The OO/OS 38 kHz beamformer adds up to 14Ω of internal resistance to each pair of receive lines.

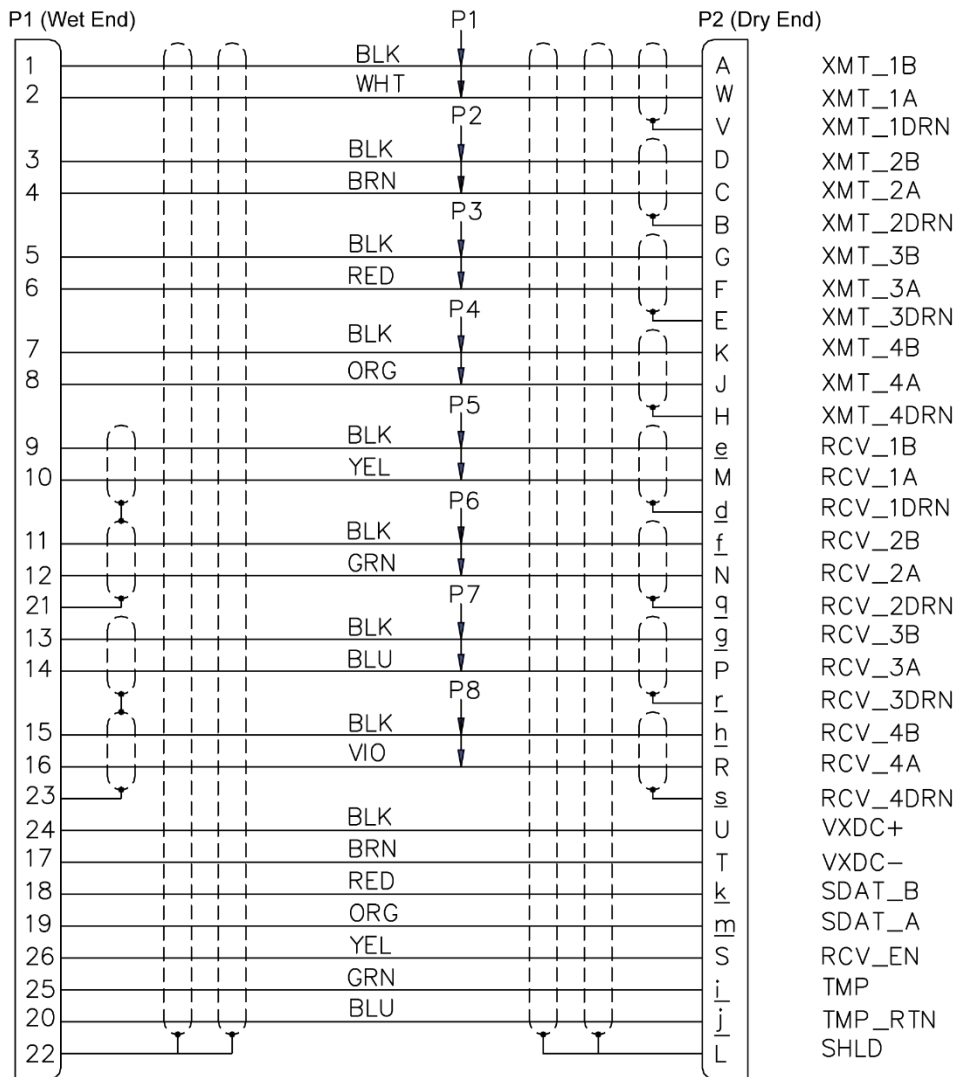
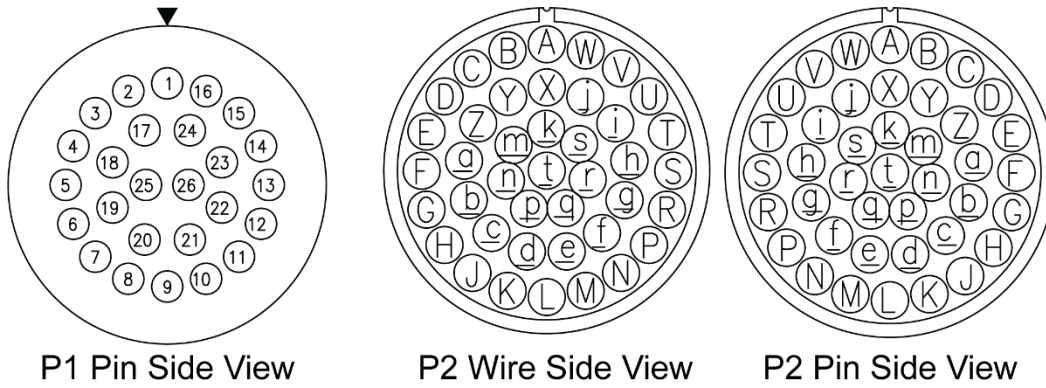


Figure 6. I/O Cable Wiring (73A-6010)

## Navigation Interface Considerations

*VmDas* can read in, decode, and record ensembles from an ADCP and NMEA data from some specific (i.e. GPS and attitude sensors) external devices. *VmDas* stores this data in both raw data files (leaving all original data input in its original format) and in a combined, averaged data file. *VmDas* uses all this data to create different displays for the user.

*VmDas* looks for and utilizes the following strings if transmitted: standard GGA (position), HDG/HDT (Heading), VTG (speed and track) messages, and a proprietary PRDID (pitch and roll) message.

As well as being able to input NMEA strings to *VmDas*, it can produce NMEA output strings of speed log information. The speed log contains VDVBW (ground/water speed) and VDDBT (depth).



For more information about NMEA data, see the *VmDas* User's Guide.

## Using Trigger-In and Trigger-Out

The Trigger Input allows the Ocean Surveyor/Observer to be synchronized by an external +5V logic level signal. The minimum duration for the Trigger Input is 1ms. The Input resistance is at least 2.7 kOhm. The Trigger Output is a +5V logic level signal as well. The nominal source resistance of the Trigger Output is 50 Ohms.

The Trigger Output and Input is controlled by the *CX a,b* command, where *a* controls the Trigger Input mode, and *b* the Trigger Output mode. For flexibility, several modes for the Trigger Input and Output operation have been implemented. See Table 4 for a description of the command.



Trigger-In is available only for systems using firmware version 23.xx or later and using the new electronics chassis back panel.

The Trigger In and Trigger Out B-N-C connectors use the center post as the signal input. The outside of the B-N-C connector is used for ground.

The ADCP performs a cycle of reading sensors (known as overhead), transmitting, blanking, processing, and sleep for each ping. When the *CX* command is enabled (by any setting of *CX* other than *CX0,o*), the ADCP will enter a transmit trigger wait state just before the transmitting portion of the cycle. It is during this wait state that the *Trigger In* input is read by the ADCP. This results in the following caution:



The ADCP does not store trigger in inputs. This means that the ADCP will only acknowledge pulses it sees during the transmit trigger wait state. For example, if three trigger in pulses were sent to the ADCP in quick succession only the pulse that occurred during the transmit trigger wait state would be used. The other pulses would be ignored and lost.

The setting of the *CX* command tells the ADCP what type of input signal (either pulse or a DC level) will be sent as the trigger. The following are the available inputs:

**Table 4: Trigger-In Input/Output Signals**

Command	Action:	Description
CX 0,b	Trigger Input off	Normal operating mode.
CX 1,b	Positive edge Trigger Input	Used if Ocean Surveyor/Observer is to be Triggered by other equipment. One ping is executed on every rising edge of the Trigger signal. Care has to be taken by the user not to exceed the maximum allowable transmit duty cycle of 15%.
CX 2,b	Negative edge Trigger Input	Used if Ocean Surveyor/Observer to be Triggered by other equipment. One ping is executed on every falling edge of the Trigger signal. Care has to be taken by the user not to exceed the maximum allowable transmit duty cycle of 15%.

Command	Action:	Description
CX 3,b	Any edge Trigger Input	Used if Ocean Surveyor/Observer to be Triggered by other equipment. One ping is executed on every rising and falling edge of the Trigger signal. Care has to be taken by the user not to exceed the maximum allowable transmit duty cycle of 15%.
CX 4,b	High level Trigger Input	Used if Ocean Surveyor/Observer to be Triggered by other equipment. The OS transmits pings as long as the High level of the Trigger signal is present. In this way, a single ping or multiple pings can be transmitted depending on the duration of the High level. Care has to be taken by the user not to exceed the maximum allowable transmit duty cycle of 15%. A time between pings has to be set for cases where multiple pings should be transmitted.
CX 5,b	Low level Trigger Input	Same as CX 4,b except the Trigger is active at the low-level of the Trigger signal. Care has to be taken by the user not to exceed the maximum allowable transmit duty cycle of 15%. A time between pings has to be set for cases where multiple pings should be transmitted.
CX a,0	Trigger Output off	Normal operating mode.
CX a,1	Trigger Output – XMT	The Trigger Output is at a high level during the time the Ocean Surveyor/Observer transmits.
CX a,2	Trigger Output – RCV	The Trigger Output is at a high level during the time the Ocean Surveyor/Observer receives.
CX a,3	Trigger Output – X/R	The Trigger Output is at a high level during the time the Ocean Surveyor/Observer transmits and receives.
CX a,4	Trigger Output – inverted X/R Trigger	Identical to CX a,3, except the signal is inverted. The Trigger Output is at a high level while the OS is <i>not</i> transmitting or receiving.

## Installation Overview

Read these steps before doing them. In general, follow them in the order listed. Some may differ for your installation, so modify them as necessary. Some can be done simultaneously (e.g., hardware installation and software loading). If you have problems or questions, call us.

1. On receipt of the system, read the Deployment Guide and check that you have all of the Ocean Surveyor/Observer equipment.
2. Before installing the system, test the transducer and electronics chassis right out of the shipping container. Do the following:
  - a. All power to the system DISCONNECTED.
  - b. Review [Power Considerations](#).
  - c. Connect the I/O cable from the electronics chassis to the transducer.
  - d. Connect the serial I/O cable from the computer to the electronics chassis.
  - e. Connect the power cable to the electronics chassis and apply power to the system (see Figure 3).
  - f. Follow testing procedures in the Ocean Surveyor/Observer Technical Manual. Test the system. If errors occur, use the Troubleshooting section.



Do NOT ping the Ocean Surveyor/Observer with the transducer in air. The power assembly board will short, causing the electronics chassis to no longer communicate. The transducer is pinged by sending a CS or PT5 command or if *VmDas* is started for collecting data – either of these methods will cause damage if the transducer is in air.

3. Prepare the system for shipboard installation. Disconnect all power to the system. Disconnect all interface cables.
4. Review [Transducer Mounting Considerations](#). Install the transducer head.



Take steps to prevent leaks through the hull and gate valves.

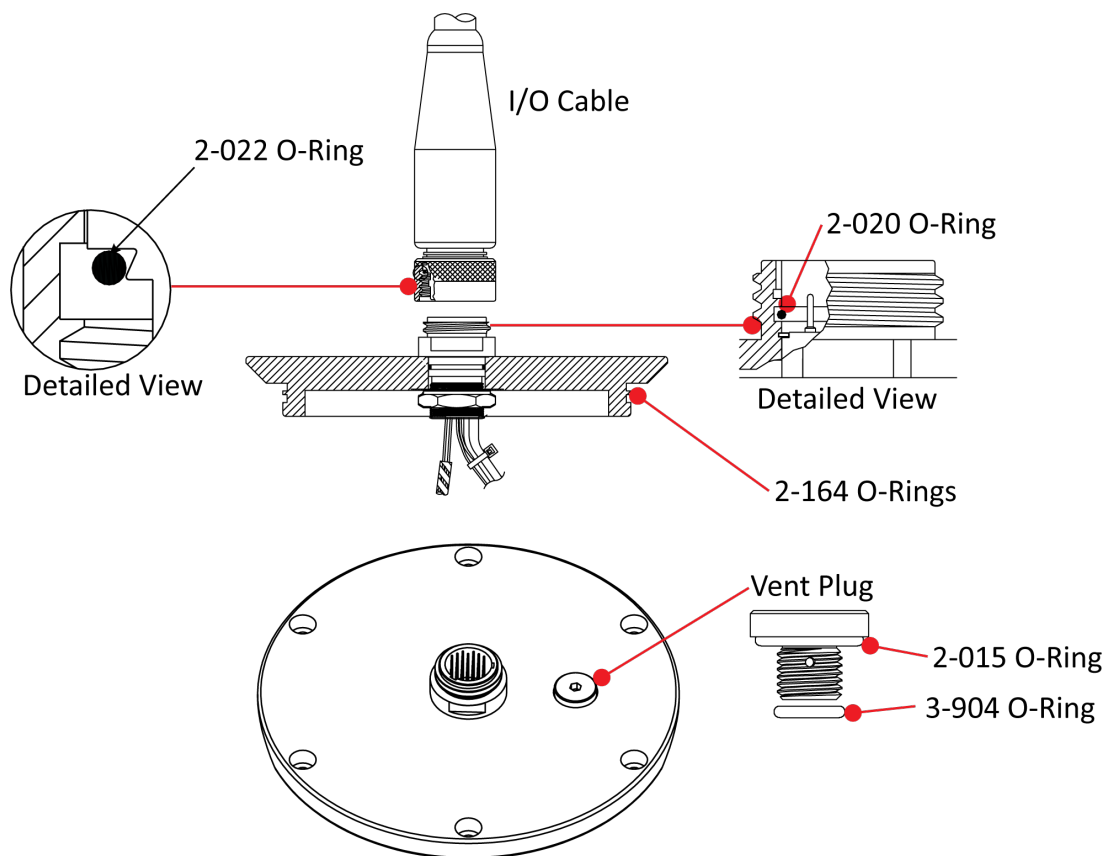
5. Mechanically align the system (see [Alignment Overview](#)).
6. Review [Electronics Chassis Considerations](#). As necessary, do the following.
  - a. Install the electronics chassis.
7. Review [Computer Considerations](#). Install the computer.
8. Review [Cabling Considerations](#). As necessary, route and connect the following cables:
  - Transducer to chassis (J1) interface cable.



The I/O connector on the transducer uses a 2-020 O-ring.

The I/O cable (wet end) uses a 2-022 O-ring. The 2-022 O-ring has a tendency to fall out if the cable connector is dropped.

**Always check that both O-rings are in place when connecting the I/O cable to the transducer. If either O-ring is missing, the ADCP will flood.**



**Figure 7. Check for O-Ring Installation on Cable and End-Cap**



The vent plug is used by TRDI for a helium leak test and nitrogen purge during manufacturing or repair. **There is no need to remove the vent plug.** If it is removed, replace the O-rings and tighten the vent plug to the recommended torque value of 6.8 Newton-meters (60 pound-inches).

- Navigation to computer cable.



Signals may be present from the navigation device.

9. As necessary, load the software on the computer's hard drive. See the software User's Guides and the Readme.txt files for each program.
10. Configure *VmDas*. See the *VmDas* User's Guide for help on configuring *VmDas*.
11. Do the Dock Side Tests (see the Ocean Surveyor/Observer Technical Manual, Test section). If errors occur, use the Troubleshooting section.
12. Do the Sea Acceptance testing (see the Ocean Surveyor/Observer Technical Manual, Test section). The Sea Acceptance tests include:
  - Interference
  - Water Profile Range
  - Ringing (cross-coupling, other pingers, noise)
  - Water Profile Reasonableness (transducer alignment)
  - Bottom-track (range, accuracy)

# Alignment Overview

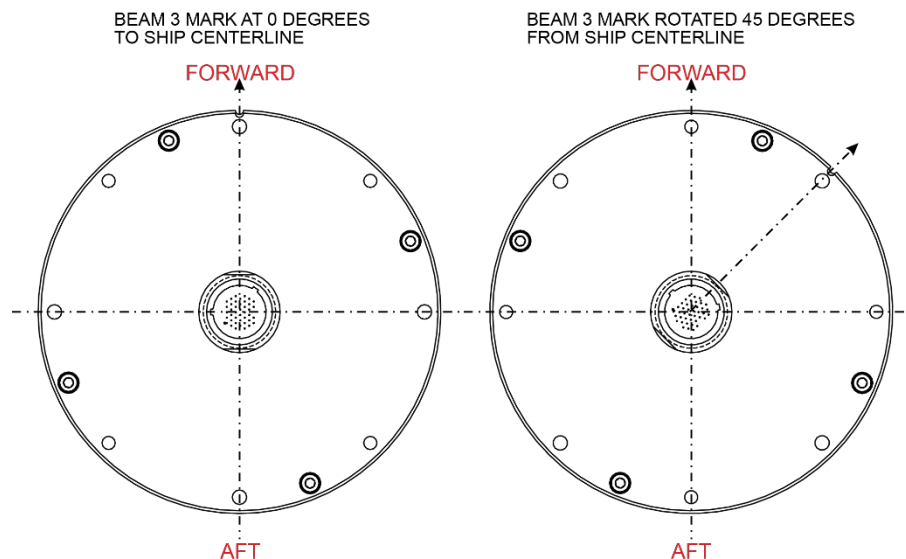


This section does not apply to stationary systems (such as Oil Rig platforms). These systems use an internal compass by default.

The mechanical alignment of the transducer head is important to ADCP data accuracy. Mechanically mount the head as close as possible to your reference point. This is usually with the Beam 3 mark at  $0^\circ$  or  $45^\circ$  relative to the ship's fore-to-aft centerline. You also must mount the transducer head as level as possible using the ship's roll and pitch references. Review the [Transducer Mounting Considerations](#) for alignment considerations.

*VmDas* uses the **Heading Correction Parameters** on the **Transforms** tab to align the ADCP's north reference (Beam 3 mark) to the north reference of an external compass. Ships use the bow as the north reference.

When the Ocean Surveyor/Observer is aboard a vessel, the mechanical alignment of the transducer head (Beam 3 mark) is usually aligned with the ship's fore-to-aft centerline ( $0^\circ$ ) or rotated  $45^\circ$  clockwise. To conceptually determine the misalignment angle, visually hold the ADCP still and turn the ship's north reference to match the ADCP's north reference. For example, if the Beam 3 mark is pointing at the bow (Figure 8), the misalignment angle is zero. If the Beam 3 mark is pointing  $45^\circ$  to starboard (Figure 8), you must turn the ship's north reference a  $+45^\circ$  to align the two north reference points. Conversely, if the Beam 3 mark is pointing  $45^\circ$  to port, you must turn the ship's north reference a  $-45^\circ$  to align the two reference points.



**Figure 8. Transducer Misalignment Reference Points**

# Chapter 2

## TRANSDUCER INSTALLATION



In this chapter, you will learn:

- Transducer mounting considerations
- Location
- Orientation
- Other considerations



# Transducer Mounting Considerations

You must consider several potential problems before installing the transducer assembly. Read this section before deciding where to install the transducer assembly. See the outline installation drawings (see [Outline Installation Drawings](#)) for specifications on our standard Ocean Surveyor/Observer transducer.

## Location

Ideally, you want to install the transducer assembly:

- Where it is accessible both internally (for access to transducer electronics) and externally (to remove biofouling).
- Where the I/O cable length is 100 m (328 feet) or less.
- Away from shipboard protrusions that reflect ADCP energy. Allow for a reflection-free clearance of 15° around each beam (see the outline installation drawings).
- Away from other acoustic/sonar devices, especially those operating at the same frequency (or harmonic) of the ADCP.
- Close to the ship's fore-to-aft centerline. As distance from the centerline increases, vertical accelerations caused by the roll of the ship also increase. These accelerations can cause additional uncertainties in ADCP velocity measurements.

## Orientation

The 38 kHz oval transducer should always be mounted with the transducer's beam 3 mark on axis (forward). If you have a round Ocean Surveyor/Observer transducer, then we recommend you mount the transducer head with the Beam 3 mark rotated to a ship-relative angle of 45°. Figure 8 shows the beam orientation. This causes the magnitude of the signal in each beam to be about the same. This improves error rejection, reduces the effect of ringing (see [Acoustic Isolation](#)), and increases the ADCP's effective velocity range by a factor of 1.4. If you align Beam 3 at an angle other than zero, you must nullify this offset (see [Alignment Overview](#)). You can do this through our *VmDas* program or using a direct command.

Use the ship's roll and pitch reference to mount the transducer head as level as possible. If the head is not level, depth cell (bin) mapping will be incorrect. Large misalignments can cause large velocity measurement errors. If you cannot mechanically make the transducer head level, you can use *VmDas* to enter offset values for roll and pitch, or use direct commands for roll/pitch offsets (see [Alignment Overview](#)).

## Other Considerations

Once you have chosen a mounting location and orientation, take into consideration the following sections.

## Floating Objects

Our transducer assembly is sturdy, but we did not design it to withstand collisions with all floating objects. We strongly suggest you use one of the following.

## Acoustic Window

While we do not fully understand windows, we do believe that windows can be used to produce overall performance improvements in vessel-mounted ADCPs. Additionally, if the ship operates where there is danger of barnacle damage or a high density of ice or other floating objects, then the use of an acoustic window is the only option. For more information, see [Using Acoustic Windows](#).

## Sea Chest

A sea chest is a fixture that surrounds and holds the transducer head, protecting it from debris in the water. The bottom of the sea chest must be open to seawater to allow the acoustic beams to pass through freely. For more information, see [Conceptual Transducer Well Design](#).

## Fairing

A fairing is a structure that produces a smooth outline and reduces drag or water resistance. The fairing also diverts floating objects away from the transducers. A fairing shaped like a teardrop, sloped such that the leading edge (closer to the bow) is higher than the back edge, and extends below the hull (typically 12 inches) will divert the air bubbles away from the transducer faces.

## Air Bubbles

Design your installation to minimize the volume of air bubbles in the path of the acoustic beams. Air bubbles attenuate (weaken) the signal strength and reduce the ADCP profiling range. Ships with a deep draft or a non-flat bottom have fewer problems with bubbles. Ways to reduce bubble flow vary with ship characteristics, but two options are available. Mount the transducers below or away from the bubble layer.

- The flow layer is usually within the first two feet below the hull. Bubbles can be trapped in this layer. Mounting the transducer head amidship on the fore-to-aft centerline may help. For ships with propulsion systems that make large amounts of bubbles, use a mounting technique that lets you lower the transducer head below the hull while underway.



If you use locally made or existing extension hardware instead of the hardware available from TRDI, you may need to make an adapter plate to connect your hardware to our transducer head. See [Outline Installation Drawings](#) for the bolt hole locations.

- Divert the bubble layer so it flows around the transducers - You can use fairings to alter the bubble flow (see [Fairing](#)). An acoustic window (see [Acoustic Window](#)) may help reduce the bubble problem, but can cause ringing (see [Acoustic Isolation](#)) and attenuation problems.

## Flow Noise

Water flowing over the transducer faces increases the acoustic noise level, which decreases the profiling range of the ADCP. You can reduce the flow across the transducer faces with a sea chest, fairing, or acoustic window.

## Corrosion and Cathodic Disbondment

Never attach anodes directly to the transducer head. Additional anodes or impressed voltage systems can cause the urethane to separate from the transducer (cathodic disbondment) or cause the material of the transducer to break down. Standard anode protection used for the ship should be installed outside of the well of the transducer head. Mounting of ship's standard anode protection outside of the transducer well will typically not cause any problems. Our transducers are made of a material that has shown to corrode very little over time when the above precautions are met. The corrosion can be further reduced if the well is covered with a window and then filled with fresh water.

## Ringling

The ADCP transmits an acoustic pulse into the water. The main lobe of this pulse bounces off particles in the water and the signals returned from these particles are used to calculate the velocity of the water.

As stated, the main lobe of the transmitted pulse is what we are using to process and calculate a velocity. The transmitted pulse, however, is made up of many side lobes off the main lobe. These side lobes will come in contact with metal of the transducer beam itself and other items in either the water or the well.

The energy from the side lobes will excite the metal of the transducer and anything bolted to the transducer. This causes the transducer and anything attached to it to resonate at the system's transmit frequency. We refer to this as ringling.

If the ADCP is in its receive mode while the transducer is ringling then it will receive both the return signals from the water and the ringling. Both of these signals are then processed by the ADCP. The ringling causes bias to the velocity data.

All ADCPs ring for some amount of time. Therefore, each ADCP requires a blanking period (time of no data processing) to keep from processing the ringling energy. Each ADCP frequency has a different typical ringling duration. The typical ringling period for each ADCP frequency is as follows; 38 kHz is 16 meters, 75 kHz is 8 meters, and 150 kHz ADCPs is 4 meters. These typical ringling values are recommended as the minimum setting for all ADCPs using default setups.

It should be noted, on some installations the effects of ringling will last longer than the recommended settings above. For example, the effects of ringling will last longer if the transmit signal becomes trapped inside the transducer well. This can occur because the well itself is ringling with the transducer or when windows covering the opening of the well reflect the signal back inside the well.

The window causes the transmit signal to reflect back into the well due to the difference in impedance between the window and the water. When the transmit signal is reflected in the well it becomes trapped and this results in longer ringling periods. To keep from processing this signal, the blanking period must be increased. Lining the inside walls of the well with a sound absorbing material aid in dampening the ringling effect.

## Acoustic Isolation

Try to minimize the acoustic coupling between the transducer head and the ship. Without adequate acoustic isolation, the transducer output will ring throughout the ship and feeds back into the ADCP receive circuits. Ringling causes bias errors in water-track velocities and results in the loss of data in the closest depth cells (bins). Reflections inside a sea chest with an acoustic window also can cause ringling.

You can attain acoustic isolation several ways. At a minimum, use gaskets to isolate all contact points between the ship and the transducer head. Design your installation for:

- A minimum number of contact points between the transducer head and the ship.
- Minimal contact area.
- Single points of contact for positioning and support (when possible).

You also should try to separate the transducer head from the ship using intermediate connections. This is because direct connections transfer the most acoustic energy. Texas A & M used the following installation technique and had minimal ringing problems.

- Transducer head mounted to a thin steel plate
- Steel plate positioned with three pins set into mounting holes on the hull; pins isolated with gaskets
- Steel plate held in place with four I-beams welded to a frame
- Frame bolted to another frame and separated by gaskets
- Second frame bolted to the ship and separated by gaskets

Acoustic isolation from other acoustic devices on the ship is also necessary. You can do this using the following techniques.

- Mount the other acoustic devices as far apart as possible.
- Make sure neither the main lobes nor the side lobes of the acoustic devices point at the transducers, including acoustic reflections.
- Do not to operate devices that use the same frequency or a harmonic of the ADCP's frequency.

## Maintenance

The Ocean Surveyor / Ocean Observer Technical Manual, Maintenance section explains routine maintenance procedures. You rarely need access to the electronics inside the transducer head. However, one external maintenance item is important enough to mention here as it may affect how you install the transducer head.

Objects deployed within about 100 meters (328 feet) of the surface are subject to the buildup of organic sea life (biofouling). This means Ocean Surveyor/Observers are subject to biofouling. Soft-bodied organisms usually cause no problems, but hard barnacle shells can cut through the urethane transducer face causing transducer failure and leakage into the ADCP.

The best-known way to control biofouling is cleaning the ADCP transducer faces often. However, in many cases this is not possible. The other alternatives include the use of a window or some sort of anti-foulant protection.

Some of our users have had success applying a thin coat ( $\approx 4$  mm;  $\approx 0.16$  in.) of either a 50:50 mix of chili powder and Vaseline or chili powder and silicone grease to the transducer faces. The chili powder should be the hottest that can be found. Water flowing across the transducers will wash this mix away over time. The silicone mixture tends to last longer.

Some organizations may decide to use antifouling grease. However, most antifouling greases are toxic and may cause problems. Recent tests suggest antifouling grease may cause the urethane on the transducer faces to develop cracks. Warmer temperatures accelerate this effect.

The other method is to use antifoulant paint. You can use almost any EPA approved anti-fouling paint on the housing or the urethane transducer face. Contact the antifouling paint manufacturer for preparation and application procedures.

# Chapter 3

## USING ACOUSTIC WINDOWS



In this chapter, you will learn:

- What is an acoustic window
- Material type and thickness of the window
- Insertion loss
- Conceptual transducer well design

# Acoustic Window Overview

Installation of an ADCP in a vessel is done in many ways, but typically the ADCP transducer is mounted inside of a sea chest or well. The opening of the sea chest or well can be open to the ocean or it can be covered by an *acoustic window*.

An acoustic window is a covering that can seal the opening of the sea chest but still allow the acoustic signal (both transmit and received signals) to be transferred through the window. The type, thickness, orientation, and other installation issues of the acoustic window are important to understand. If the wrong material is used or the wrong installation used then the performance obtained by the ADCP will be severely limited.

## Background - Should I use an Acoustic Window?

Like any vessel-mount, acoustic system, the performance of the ADCP is sensitive to acoustic noise. For best performance, the transducer is mounted in its own well, recessed in the vessel hull, with an opening slightly larger than the transducer. An Acoustic Window, mounted across the well opening, is required to isolate the transducer face from flow noise, as the vessel moves through the water. Acoustic windows (or simply windows) can produce overall performance improvements in vessel-mounted ADCPs through the following advantages.

### Advantages

- Well will not fill with air bubbles caused by the ship moving through the surface water.
- Flow noise is reduced.
- The well can be filled with fresh water to limit corrosion.
- Barnacles cannot grow on the transducer faces. Barnacle growth is the number one cause of failure of the transducer beams.
- The transducer is protected from debris floating in the water.

Although these advantages are important, it should be known that if the wrong window is used or if the window is not installed properly then the following disadvantages are possible.

### Disadvantages

- The range of the ADCP can be reduced because the window will absorb some of the transmit and receive energy.
- The transmit signal could be reflected into the well, causing the well to ring like a bell. This will cause the data being collected during the ringing to be biased. Some ships have reported a loss in range as great as 50 meters. Applying sound absorbing material on the well walls may dampen the ringing.
- The transmit signal could be reflected off of the window and back into the other beams.

However, even though there are disadvantages possible our experience has shown that when the correct window is used and it is properly installed that the window advantages are far more important. The remainder of this Application Note will focus on how to choose the window for your vessel, how to mount the window, how to maintain the window, and any other associated concerns when using a window.

# What Window should I use?

While we cannot claim to understand every window, we do believe that we can recommend a material that will work. We have developed a simple model for an acoustic window made from polycarbonate material. Over the past 2 decades we have obtained feedback from customers that have allowed us to prove the model is a fair estimation of what to expect for performance. Polycarbonate was chosen because it can provide enough strength for most installations, is readily available in most countries, it has been shown to last a long time (over 7 years in some installations), and it can be used on all ADCP models (NarrowBand (NB), BroadBand (BB), WorkHorse (WH), and Ocean Surveyor (OS)).

The type of ADCP model is very important when choosing a window. The bandwidth of the acoustic signal from the ADCP must be maintained. Different window materials have different losses over a band of frequencies. As an example, the Ocean Surveyor/Observer ADCP uses a bandwidth of 6% or 1% about the system’s center frequency. A BroadBand or WorkHorse ADCP uses a bandwidth of 25% or 6% about the system’s center frequency. The material polycarbonate has a fairly uniform loss about these frequency bandwidths.

It should be noted that we have no knowledge about the variability of polycarbonates. And so, the acoustic model that we run is for a particular polycarbonate manufactured by Zelux. This is a window-grade, polycarbonate and has a high tensile strength (~9000psi) to resist cracking.

Even when choosing this particular window it is important to choose the proper thickness of window material. A window will absorb sound and reduce the range of the ADCP. Therefore, we always recommend using the thinnest window possible. However, depending on your application a thicker material may be necessary. The following table indicates the expected loss (two-way) of polycarbonate at different frequencies and thickness.

**Table 5:** Expected Loss for ADCPs with 30Degree Beam Angle

Frequency (kHz)	Thickness mm (in.)	One-way loss @ 0°,20°,40°C (dB)			Two-way loss @ 0°,20°,40°C (dB)			Expected Loss in Range (meters)
38	76.2 (~3.0)	2.7	2.6	2.3	5.4	5.2	4.6	173
38	63.5 (~2.5)	3.0	2.9	2.5	6.0	5.8	5.0	192
38	50.8 (~2.0)	2.9	3.2	2.9	5.8	6.4	5.8	205
<b>38</b>	<b>38.1 (~1.5)</b>	<b>1.4</b>	<b>1.2</b>	<b>1.0</b>	<b>2.8</b>	<b>2.4</b>	<b>2.0</b>	<b>90</b>
38	25.4 (~1.0)	2.9	3.3	3.3	5.8	6.6	6.6	211
<b>38</b>	<b>19.1 (~0.75)</b>	<b>1.0</b>	<b>0.9</b>	<b>0.8</b>	<b>2.0</b>	<b>1.8</b>	<b>1.6</b>	<b>64</b>
38	12.7 (~0.5)	5.3	5.8	5.6	10.6	11.6	10.2	371
38	9.5 (~0.375)	1.8	1.8	1.8	3.6	3.6	3.6	115
38	6.4 (~0.25)	0.7	0.7	0.6	1.4	1.4	1.2	45
75	76.2 (~3.0)	4.2	4.3	3.8	8.4	8.6	7.6	138
75	63.5 (~2.5)	3.9	4.0	3.5	7.8	8.0	7.0	128
75	50.8 (~2.0)	3.6	3.6	3.0	7.2	7.2	6.0	115
75	38.1 (~1.5)	2.7	2.6	2.3	5.4	5.2	4.6	83
75	25.4 (~1.0)	3.1	3.3	2.9	6.2	6.6	5.8	106
<b>75</b>	<b>19.1 (~0.75)</b>	<b>1.4</b>	<b>1.2</b>	<b>1.0</b>	<b>2.8</b>	<b>2.4</b>	<b>2.0</b>	<b>45</b>
75	12.7 (~0.5)	3.1	3.5	3.3	6.2	7.0	6.6	112
<b>75</b>	<b>9.5 (~0.375)</b>	<b>1.0</b>	<b>0.8</b>	<b>0.7</b>	<b>2.0</b>	<b>1.6</b>	<b>1.4</b>	<b>32</b>
75	6.4 (~0.25)	5.9	6.3	5.5	11.8	12.6	11.0	202
150	50.8 (~2.0)	5.0	5.2	4.6	10.0	10.4	9.2	83
150	38.1 (~1.5)	4.2	4.4	3.8	8.4	8.8	7.6	70
150	25.4 (~1.0)	3.6	3.6	3.0	7.2	7.2	6.0	58
<b>150</b>	<b>19.1 (~0.75)</b>	<b>2.7</b>	<b>2.6</b>	<b>2.3</b>	<b>5.4</b>	<b>5.2</b>	<b>4.6</b>	<b>43</b>

Frequency (kHz)	Thickness mm (in.)	One-way loss @ 0°,20°,40°C (dB)			Two-way loss @ 0°,20°,40°C (dB)			Expected Loss in Range (meters)
150	12.7 (~0.5)	3.1	3.3	2.9	6.2	6.6	5.8	53
<b>150</b>	<b>9.5 (~0.375)</b>	<b>1.4</b>	<b>1.2</b>	<b>1.0</b>	<b>2.8</b>	<b>2.4</b>	<b>2.0</b>	<b>22</b>
150	6.4 (~0.25)	3.2	3.6	3.3	6.4	7.2	6.6	58
300	25.4 (~1.0)	5.0	5.2	4.5	10.0	10.4	9.0	42
300	19.1 (~0.75)	4.2	4.3	3.8	8.4	8.6	7.6	34
300	12.7 (~0.5)	3.6	3.6	3.0	7.2	7.2	6.0	29
<b>300</b>	<b>9.5 (~0.375)</b>	<b>2.7</b>	<b>2.6</b>	<b>2.3</b>	<b>5.4</b>	<b>5.2</b>	<b>4.6</b>	<b>22</b>
300	6.4 (~0.25)	2.9	3.4	3.2	5.8	6.8	6.4	27

TRDI’s recommended thickness is in **blue bold**. TRDI’s recommended maximum thickness is in **red italic and bold** in the above table. All other items will result in poor overall performance or a loss in range that most customers find unreasonable.

One-way insertion loss curves for all items above in **bold** (TRDI’s recommended thickness) are found in Appendix A of this application note. All other plots are available from TRDI upon request.

Note all of the losses and expected ranges are estimated and some of the assumptions we make may not be true in your installation. However, based on several actual installations the values shown have proven to be good estimations. Your actual loss may be higher or lower than what is shown.

**Table 6:** Expected Loss for ADCPs with 20Degree Beam Angle

Frequency (kHz)	Thickness mm (in.)	One-way loss @ 0°,20°,40°C (dB)			Two-way loss @ 0°,20°,40°C (dB)			Expected Loss in Range (meters)
38	76.2 (~3.0)	N/A	N/A	N/A	N/A	N/A	N/A	N/A
38	63.5 (~2.5)	N/A	N/A	N/A	N/A	N/A	N/A	N/A
38	50.8 (~2.0)	N/A	N/A	N/A	N/A	N/A	N/A	N/A
<b>38</b>	<b>38.1 (~1.5)</b>	<b>N/A</b>	<b>N/A</b>	<b>N/A</b>	<b>N/A</b>	<b>N/A</b>	<b>N/A</b>	<b>N/A</b>
38	25.4 (~1.0)	N/A	N/A	N/A	N/A	N/A	N/A	N/A
<b>38</b>	<b>19.1 (~0.75)</b>	<b>N/A</b>	<b>N/A</b>	<b>N/A</b>	<b>N/A</b>	<b>N/A</b>	<b>N/A</b>	<b>N/A</b>
38	12.7 (~0.5)	N/A	N/A	N/A	N/A	N/A	N/A	N/A
38	9.5 (~0.375)	N/A	N/A	N/A	N/A	N/A	N/A	N/A
38	6.4 (~0.25)	N/A	N/A	N/A	N/A	N/A	N/A	N/A
75	76.2 (~3.0)	3.1	3.2	2.8	6.2	6.4	5.6	102
75	63.5 (~2.5)	2.7	2.8	2.6	5.4	5.6	5.2	90
75	50.8 (~2.0)	2.6	2.6	2.3	5.2	5.2	5.6	90
75	38.1 (~1.5)	2.0	2.0	1.8	4.0	4.0	3.6	64
75	25.4 (~1.0)	2.2	2.1	1.8	4.4	4.2	3.6	70
<b>75</b>	<b>19.1 (~0.75)</b>	<b>0.9</b>	<b>0.9</b>	<b>1.0</b>	<b>1.8</b>	<b>1.8</b>	<b>2.0</b>	<b>32</b>
75	12.7 (~0.5)	2.8	2.9	2.4	5.6	5.8	5.4	93
<b>75</b>	<b>9.5 (~0.375)</b>	<b>1.0</b>	<b>0.9</b>	<b>0.8</b>	<b>2.0</b>	<b>1.8</b>	<b>1.6</b>	<b>32</b>
75	6.4 (~0.25)	4.2	3.7	2.7	8.4	7.4	5.4	134
150	50.8 (~2.0)	3.6	3.8	3.4	7.2	7.6	6.8	61
150	38.1 (~1.5)	3.1	3.2	2.8	6.2	6.4	5.6	51
150	25.4 (~1.0)	2.6	2.6	2.3	5.2	5.2	4.6	42
<b>150</b>	<b>19.1 (~0.75)</b>	<b>2.0</b>	<b>2.0</b>	<b>1.8</b>	<b>4.0</b>	<b>4.0</b>	<b>3.6</b>	<b>32</b>
150	12.7 (~0.5)	2.2	2.1	1.8	4.4	4.2	3.6	35
<b>150</b>	<b>9.5 (~0.375)</b>	<b>0.9</b>	<b>0.9</b>	<b>0.9</b>	<b>1.8</b>	<b>1.8</b>	<b>1.8</b>	<b>14</b>



Frequency (kHz)	Thickness mm (in.)	One-way loss @ 0°,20°,40°C (dB)			Two-way loss @ 0°,20°,40°C (dB)			Expected Loss in Range (meters)
150	6.4 (~0.25)	2.9	2.9	2.3	5.8	5.8	5.6	46
300	25.4 (~1.0)	3.6	3.8	3.4	7.2	7.6	6.8	30
300	19.1 (~0.75)	3.1	3.2	2.8	6.2	6.4	5.6	26
300	12.7 (~0.5)	2.6	2.6	2.3	5.2	5.2	4.6	21
<b>300</b>	<b>9.5 (~0.375)</b>	<b>2.0</b>	<b>2.0</b>	<b>1.8</b>	<b>4.0</b>	<b>4.0</b>	<b>3.6</b>	<b>16</b>
300	6.4 (~0.25)	2.2	2.1	1.8	4.4	4.2	3.6	18

TRDI's recommended thickness is in **blue bold**. TRDI's recommended maximum thickness is in **red italic and bold** in the above table. All other items will result in poor overall performance or a loss in range that most customers find unreasonable.

One-way insertion loss curves for all items above in **bold** (TRDI's recommended thickness) are found in [Insertion Loss](#). All other plots are available from TRDI upon request.

Note all of the losses and expected ranges are estimated and some of the assumptions we make may not be true in your installation. However, based on several actual installations the values shown have proven to be good estimations. Your actual loss may be higher or lower than what is shown.

## Are there any Other Windows that I can consider?

TRDI has only limited experience with other materials. As a result there is not much information we can provide about other materials. However, we can state that different materials will behave differently, depending on both the frequency and bandwidth of the acoustic ADCP signal. The absorption curves of various materials have significant amplitude fluctuations with frequency, which can change in both frequency and amplitude with changes in temperature.

Important acoustic properties of the window include acoustic refractive index (which should be as close as possible to that of water), insertion loss (which should be as small as possible) and speed of sound. There are two acoustic refractive indices: one for shear waves and one for plane waves. The acoustic refractive indices are simply the ratios of speed of sound in water to speed of sounds in the material. Insertion loss combines absorption and reflection of sound, and it depends on both the thickness and the material properties of the window. In particular, you should avoid using window thickness equal to odd multiples of shear mode quarter-waves (Dubbelday and Rittenmeyer, 1987; Dubbleday, 1986). Refer to Selfridge (1985) and Thompson (1990) for more information. Note that the speeds of sound in plastics decrease with increasing temperature and that causes the resonant frequencies to shift. This can be a large effect. Neither Selfridge nor Thompson has much information on the temperature coefficients of sound speeds.

- The life of the material must also be considered as well as its overall strength. We have had customers design their own windows out of Kevlar. They required Kevlar because they required a material that was very strong both for temperature and for strength against heavy seas, objects in the water, and striking the bottom or ice. Kevlar can provide this strength without having to be very thick thus minimizing loss.
- Kevlar windows have been successfully built and used by 2 different institutes (Monterey Bay Aquarium Research Institute (MBARI) in the United States, and the Institut National des Sciences de l'Univers (INSU) in France. The procedure to build the window is not known by TRDI. The properties of the Kevlar windows are not well understood and so a lot of experimentation with different thickness windows was required before these customers were satisfied with the Kevlar window.
- INSU used a graduate student, Roche Frederic in 1997, to perform a study to determine the best thickness and composite of Kevlar to provide a window for a BB VM150kHz ADCP. The report states that the material KEVLAR K49 made with Resine Vinylester ATLAC 580 was used. The following French company produced this material:

Brest-Composite Industrie  
124 Rue Auatole Frauce  
29200 – Brest, France  
Tel: 02-98-05-19-09  
Fax: 02-98-34-06-02

TRDI only knows that this single window was produced for INSU and does not know of any others who are using this material. It is TRDI's understanding that the above-mentioned company can produce the Kevlar window but cannot give the acoustic properties required to determine the losses through the window. Contacting this company is done with the knowledge that Teledyne RD Instruments is not recommending them, but only offering this as a source for the material.

## Acoustic Window Installation

In Table 5 and Table 6 we provided the recommended window material and thickness. In this section we will provide installation recommendations. Installation of the window must be done properly so that the best performance is possible. The following discussion is broken into sections so that each point can be considered individually.

### What should the Window Shape be?

The window should be smooth without cracks or deformities. Typically the window is round and of a diameter that is large enough to clear all four beams. To determine the proper diameter of the window see [Conceptual Transducer Well Design](#).

The acoustic window should be flat and parallel to the transducer mounting plate. This will result in a constant angle of 20 or 30 degrees (depending on the transducer beam angle) to the transducer on both the inside and outside window face.

Dome shaped windows have been used successfully. However, if the water temperatures inside the window and outside the window are not the same, all four beams will be refracted and actual velocity components will be rotated into a new coordinate system. In particular, some of the horizontal velocity will appear as a vertical velocity.

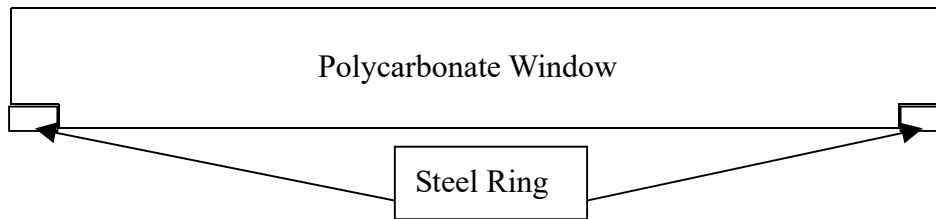
### Can I Add Strengthening to the Window?

Adding a strengthening member across the window is not recommended because this can cause similar behavior as a cracked window (see [If I find that the Window is Damaged Can I Keep Operating the ADCP?](#)) or can actually block the acoustic transmit and receive signals.

### How do I Secure the Window to the Well Opening?

We recommend that a steel ring around the outside of the window be used because you do not want the screw heads to come in direct contact with the window material as it may crack under the strain.

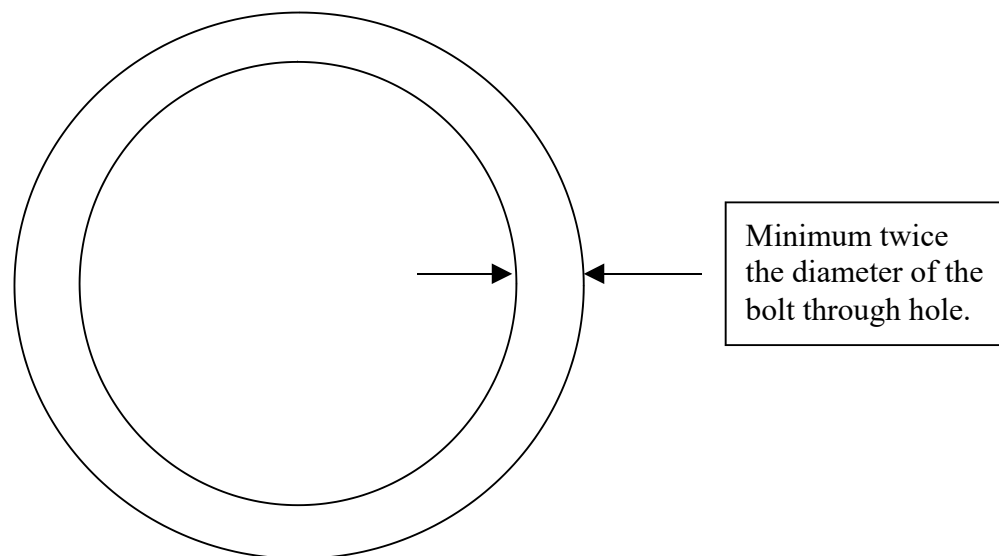
It is recommended that window be designed so that the ring will sit flush with the entire window face as shown in the Figure 9. Flat headed bolts or recessed bolts should be used. All of these will maintain a smooth surface around the entire window and will prevent any chance for cavitation (see [Do I Need to Worry About Air Bubbles When Using a Window?](#) for more information).



**Figure 9. Conceptual Drawing of an Acoustic Window with Mounting Ring**

Do not thread the holes in the polycarbonate window. Use bolt through holes spaced evenly around the window. The number of bolt through holes (typically 16 to 24 holes) should be enough to prevent leakage and will provide equal pressure on the window to prevent cracking.

The bolt circle should be located a distance from the edge of the window that is a minimum of twice the diameter of the bolt through holes, see Figure 10.



**Figure 10. Location of the Window Bolt Hole Circle Diameter**

## How to Prevent the Window from Cracking When Going Into Dry Dock?

Using as thin a window as possible may mean that the window will not be able to support the water inside the sea chest when the vessel goes into dry dock. This means that you must either be sure to have a way to drain the sea chest prior to going into dry dock or allow a way for the water to drain out of the sea chest during dry dock. The former must be done as part of the sea chest design and the latter can be accomplished by placing holes in the window face.

The holes in the window face will allow water to freely flow in and out of the well. However, drilling holes in the window will increase your chances of flow noise, air bubbles in sea chest, corrosion, bio-fouling, and will make the sea chest non-hydrostatic. The bio-fouling will require that you have regular transducer inspections and cleanings. If you make the sea chest non-hydrostatic then in heavy seas the window can crack as it flexes from wave slamming. Dave Taylor Model Basin has measured slamming pressures as high as 300 psi with durations of a few milliseconds. If the sea chest behind the window is hydrostatic, no pressure gradient will exist across the window and no substantial deflections will occur.

With those considerations in mind you may still want to drill holes in the window. Ideally, the holes should be outside the circumference of the array since the entire array is used to form the beams. If the

holes are inside the array circumference and are a fraction of a wavelength, such as  $\lambda/20$  or smaller, then the effect these holes may have on distorting the beam pattern should be small. If the holes are larger than  $\lambda/20$  but not more than  $\lambda/10$ , then the number of holes should be only a few and ideally are randomly distributed. Holes larger than  $\lambda/10$  should be outside the array circumference.

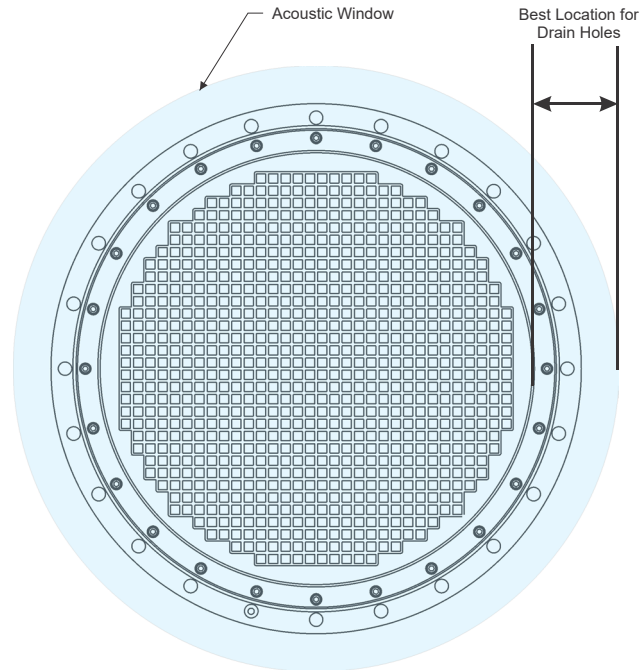


Figure 11. Ideal Drain Hole Locations

## How Much Space should I Have between the Window and Transducer?

Never allow the transducer to touch the window. Separation is good for reducing the strength of the multiple fields of flow noise. However, we must limit the separation to prevent the reflection of a beam off of the window into another beam. This causes cross talk between the beams.

Therefore, with all ADCP models and frequencies the recommended distance between the transducer and the inside face of the window should be between 6.4mm to 12.7mm. This will ensure that there is no cross talk between beams and will provide adequate spacing to reduce flow noise. See [Conceptual Transducer Well Design](#) for more sea chest design issues.

# What Other Issues should be Considered When Using an Acoustic Window?

Once you decide to use a window there are many issues that no longer are a worry but there are other new issues you do need to worry about. This section will outline each of these items and the issues related to them.

## What Fluid Should I Fill the Sea Chest With?

If you have not placed holes in the window and you are not going to work in an area where freezing is an issue, then the sea chest should be filled with fresh water. Fresh water decreases the issues of corrosion in the sea chest. If you will be in an area where freezing of fresh water would be an issue, then seawater can be used.

Some users have placed Propylene Glycol into the fresh water well to prevent freezing. TRDI recommends using a 40% Polypropylene Glycol + 60% freshwater mixture or 10% Polypropylene Glycol + 90% freshwater mixture depending on the water freezing temperature. Although this causes the water to have an inverted speed of sound (SoS) change to that of fresh water or salt water, SoS does not impact 2D velocities on a Phased Array Transducer.



Only use Propylene Glycol and not Ethylene Glycol because the latter can harm the transducer urethane over time.

## How Much Fluid Should I Use in the Sea Chest?

The transducers must be completely immersed in water. No air should be in front of the transducers and the pressure within the sea chest should be adjusted to keep the window from bowing in and out, and thereafter, the volume should be kept constant.

## Should I Use Absorption Material When Using a Window?

The window causes some of the transmit signal to reflect back into the well due to the difference in impedance between the window and the water. When the transmit signal is reflected in the well it becomes trapped and this results in what is called ringing. To keep from processing this signal, the blanking of the ADCP will have to be increased.

However, in extreme cases, ringing can last a period that will cause the first 50-100 meters of data to be unusable. Therefore, a sound absorbing material should be used inside the sea chest to minimize the effects of sound ringing within the sea chest. The material should be a minimum of one wavelength thick (include the sound speed of the absorbing material when calculating the size of a wavelength). Approximate wavelengths of sound in seawater are given below in Table 7. Using standard neoprene wet suit material has been found to work well with 75 and 150 kHz frequency ADCPs.

**Table 7:** Wavelength of sound in seawater (1500 m/s sound speed)

Frequency (kHz)	Wavelength (mm)
38	40
75	20
150	10
300	5

## Do I Need to Worry About Corrosion When Using a Window?

Corrosion is always possible. However, our transducers are made of a material that has shown to corrode very little over time when the above precautions are met. There is nothing that you can do to protect the transducer from corrosion. However, if the well is covered with a window and then filled with freshwater corrosion can be further minimized. You should inspect the transducer regularly for signs of corrosion.

Note, never attach any anodes directly to the transducer head. Additional anodes or impressed voltage systems can cause the urethane to separate from the transducer (cathodic disbondment) or cause the material of the transducer to break down. Standard anode protection used for the ship should be installed outside of the well of the transducer head. Mounting of ship's standard anode protection outside of the transducer well will typically not cause any problems.

## Do I Need to Worry About Air Bubbles When Using a Window?

All vessels create air bubbles in the water as the ship moves through the water. Ships with a deep draft or a non-flat bottom have fewer problems with bubbles. If you are using a window, these bubbles will still be present. If the window is sealed, then this air will not fill the sea chest. However, if the window is not sealed then air can fill the sea chest. You must make sure to vent air from the sea chest periodically if there is a possibility that air will become trapped in your sea chest.

To avoid air bubbles from getting into the front of the window you should mount the transducers below or away from the bubble layer. The flow layer is usually within the first two feet below the waterline. Bubbles can be trapped in this layer. Mounting the transducer head amid ship on the fore-to-aft centerline may help. Another technique is to divert the bubble layer so it flows around the transducers. A fairing around the sea chest can help with this, but care must be taken so that you do not cause cavitation.

## Do windows Improve Flow Noise Problems?

Water flowing over the transducer faces increases the acoustic noise level, which decreases the profiling range of the ADCP. A window reduces the coupling of flow noise to the transducer. This is because of the gap filled with fluid between the inside of the window face and the transducer faces attenuates the flow noise. By reducing flow noise, you are increasing the signal to noise ratio. The higher the signal to noise ratio is, the better (stronger) the returned signal will appear. This will result in better data reception and longer ranges.

# What Maintenance is required when using Windows?

In general, a window provides protection to the transducer from the most common sources of problems such as bio fouling and corrosion. However, the window can still become covered with bio fouling or could become damaged. The following section discusses these issues.

## How Often Should I Inspect the Window?

Since the growth of mussels, barnacles, and other bio fouling occurs on all vessels, the window should be inspected and cleaned by divers on a regular interval. This interval should be often enough to prevent the growth of anything on the window and to allow inspection for damage to the window. It is recommended that this interval be at least once per year, but may be required more often in areas that have heavy bio-fouling growth.

When inspecting the window you should inspect for bio-fouling growth, cracks, damage, for air pockets, and for mud on the inside of the window. We have seen cases where the inside of the well became filled with mud. The mud entered through a crack in the window and where the holes were drilled in the window. Bio fouling should be cleaned off, air should be purged from the sea chest, and mud should be removed from the sea chest.

## If I find that the Window is Damaged Can I Keep Operating the ADCP?

In general, any window that is cracked or is damaged so that it is not smooth should be replaced as soon as possible.

A window that is damaged causes a problem with the acoustic transmission. The exact problem or problems seen because of this damage will vary depending on where the break is and the way a beam would strike the damage. All windows have losses because of an impedance difference to the water inside the well and outside the well. There are also losses that are built up in the window. An important loss is due to the shear wave that is created as our acoustic signal passes through the window at an angle. This shear wave traps sound in the thickness of the window as the acoustic signal tries to pass through the window. If the window has a crack in it then the window can cause this trapped energy to bounce in all directions rather than remain trapped in the window. Depending on the size of the crack, the location of the crack, and what the window does around the crack this reflected energy may even go into other beams.

Regrettably, there is no way to predict on what can happen as a crack will have a strange pattern to it. A single beam or all four beams may be affected. However, in either case it is enough to know that a crack in the window is very bad and will cause the energy that is transmitted and received in a beam to be deflected at strange angles.

Additionally, cracks can cause the window to have a rough surface. This can result in cavitation around the window. Cavitation results in air being trapped near the crack. This air can cause energy to be reflected back into the transducer well instead of traveling through the water.

## Does the Use of a Window Effect My Warranty?

The use of a window has no impact on warranty. The window is primarily an aid to optimal performance. A window isolates the transducer face from flow noise when the vessel is moving and provides protection from bio fouling. These all increase the performance and reliability of the transducer. The window will also absorb some of the transmitted and returned signals. This will have an adverse effect on performance. However, when the proper window is used this adverse effect is minimal compared to the benefits

of using a window. TRDI cannot be responsible for the acoustic design of the vessel, but that design and the installation of our transducer certainly can adversely affect the ADCP system performance.

## Insertion Loss

The following section contains insertion (one-way) loss graphs for each of the ADCP frequencies at each transducer beam angle at 0°C. These graphs are provided as an example of the expected insertion loss.

The main beam of each ADCP system at its maximum bandwidth is displayed as the red line on each graph (the  $\sin X/X$  is represented by the smaller bumps in red). The minimum and maximum frequencies used on the X-axis of the graph were chosen so that this bandwidth would be approximately centered on the graph.

The blue line represents the expected loss across this bandwidth of frequencies for this thickness of polycarbonate. The Y-axis of each graph represents the expected insertion loss. See the example below for descriptions.

Uniform Ave. IL represents the entire average insertion loss over the entire frequency (X-axis) shown. The Weighted Ave. IL represents the average insertion loss over the bandwidth of the ADCP frequency. The Weighted Ave. IL is used to complete Table 5 and Table 6 of this document.

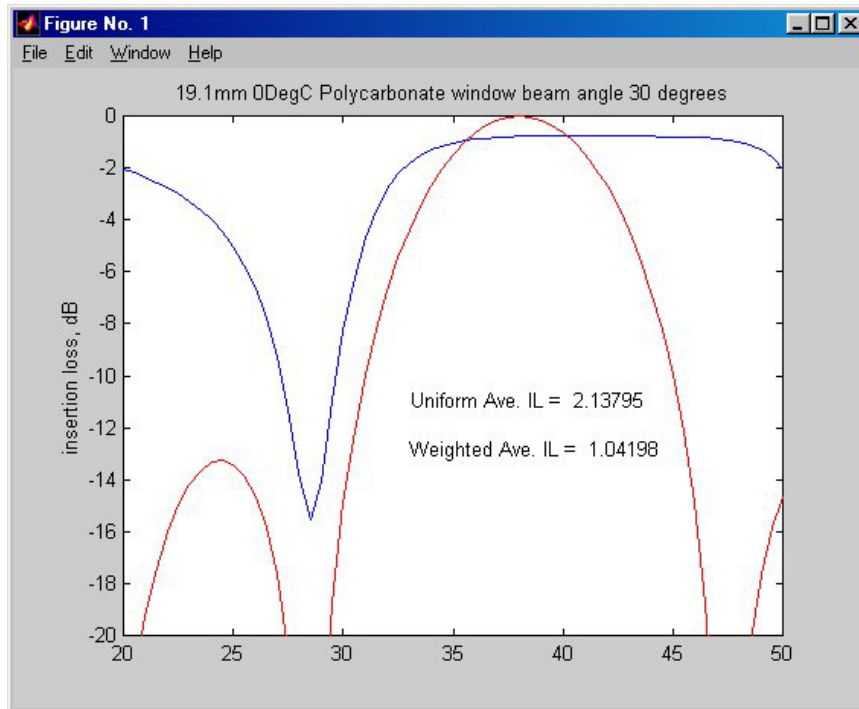


Figure 12. 38 kHz Insertion Loss (one-way) with a 19.1mm window at 0°C



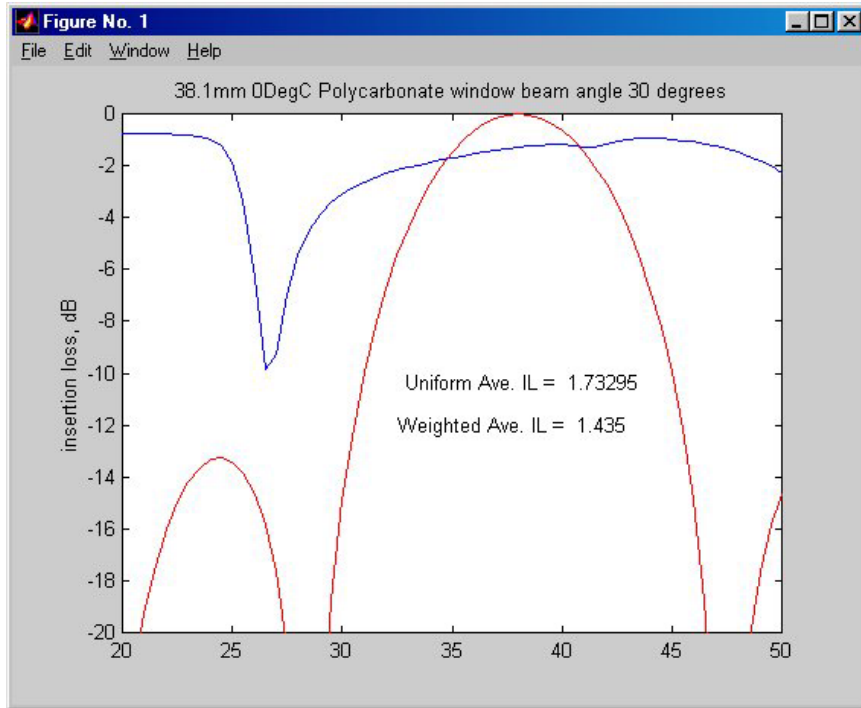


Figure 13. 38 kHz Insertion Loss (one-way) with a 38.1mm window at 0°C

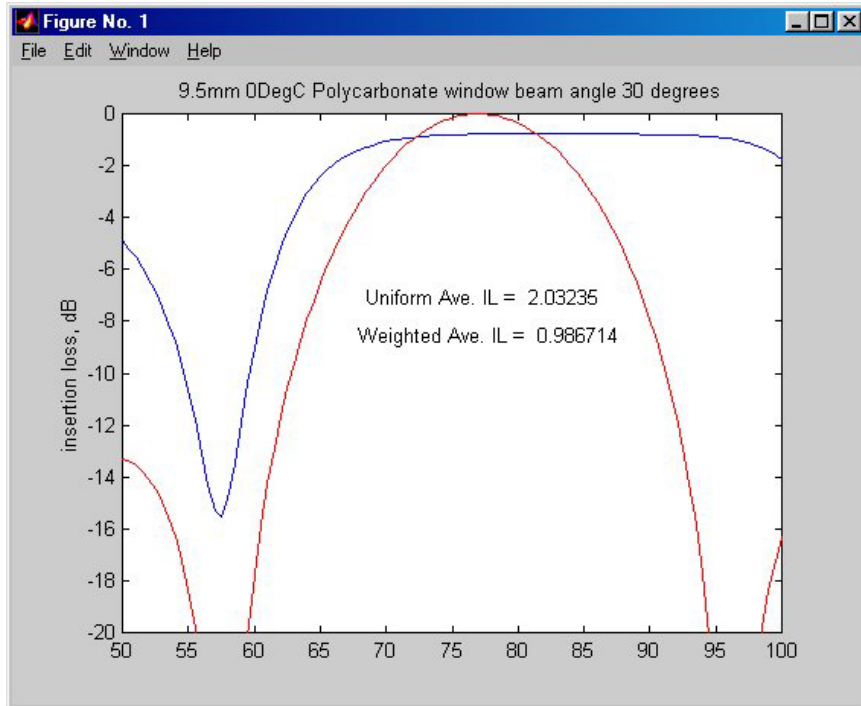


Figure 14. 75 kHz Insertion Loss (one-way) with a 9.5mm window at 0°C

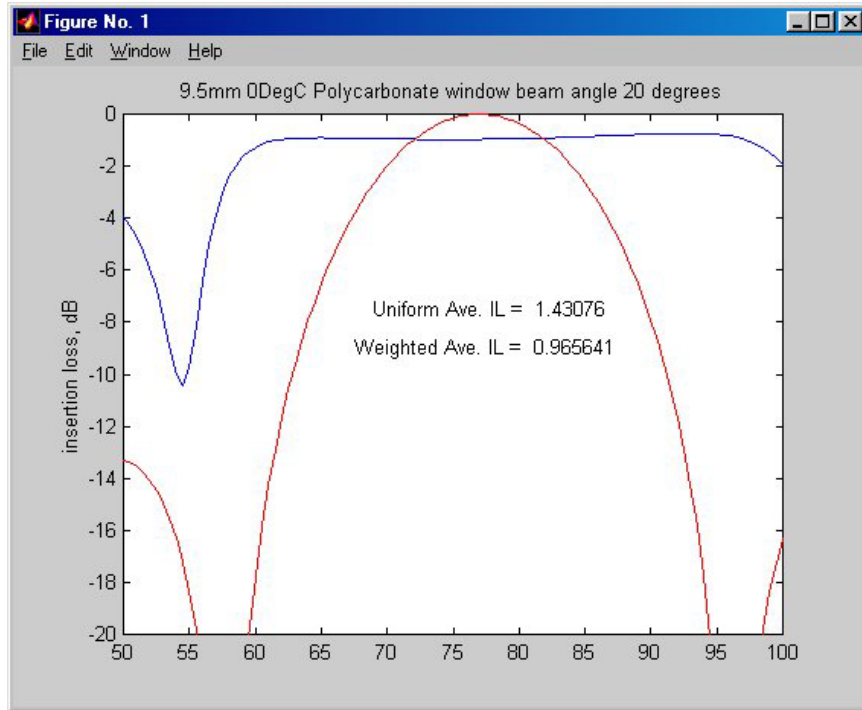


Figure 15. 75 kHz Insertion Loss (one-way) with a 9.5mm window at 0°C

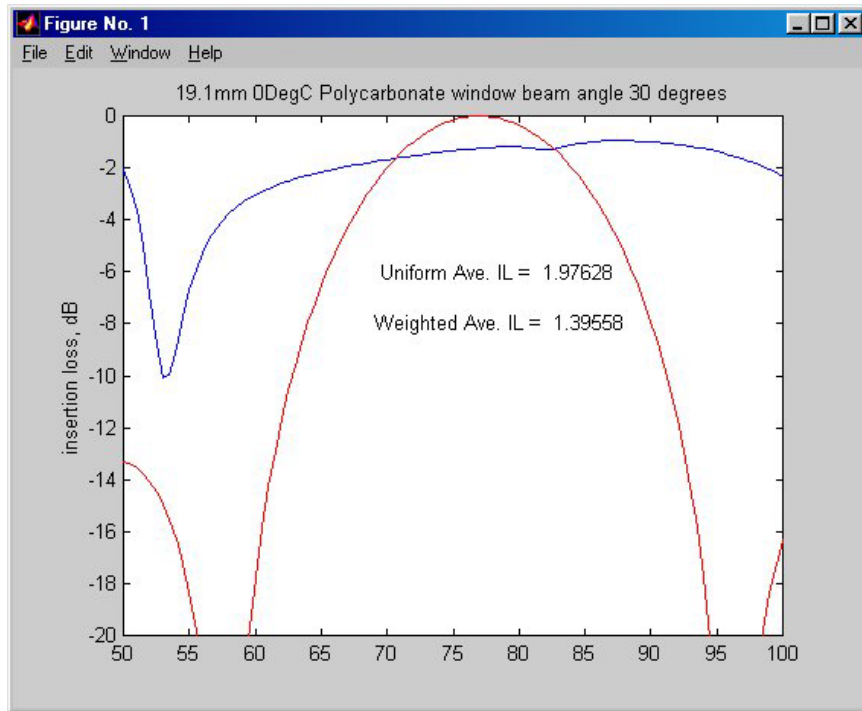


Figure 16. 75 kHz Insertion Loss (one-way) with a 19.1mm window at 0°C

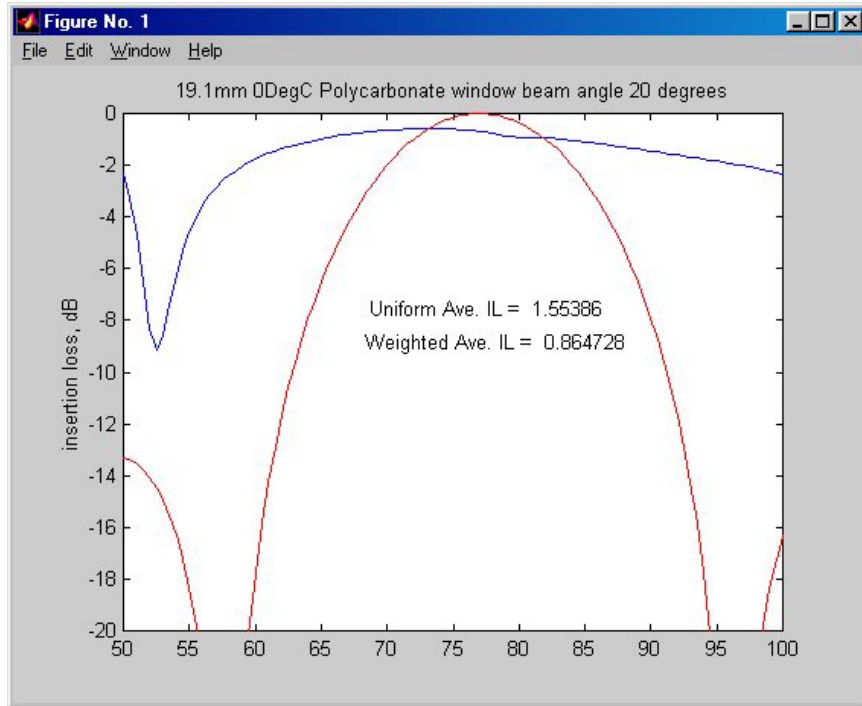


Figure 17. 75 kHz Insertion Loss (one-way) with a 19.1mm window at 0°C

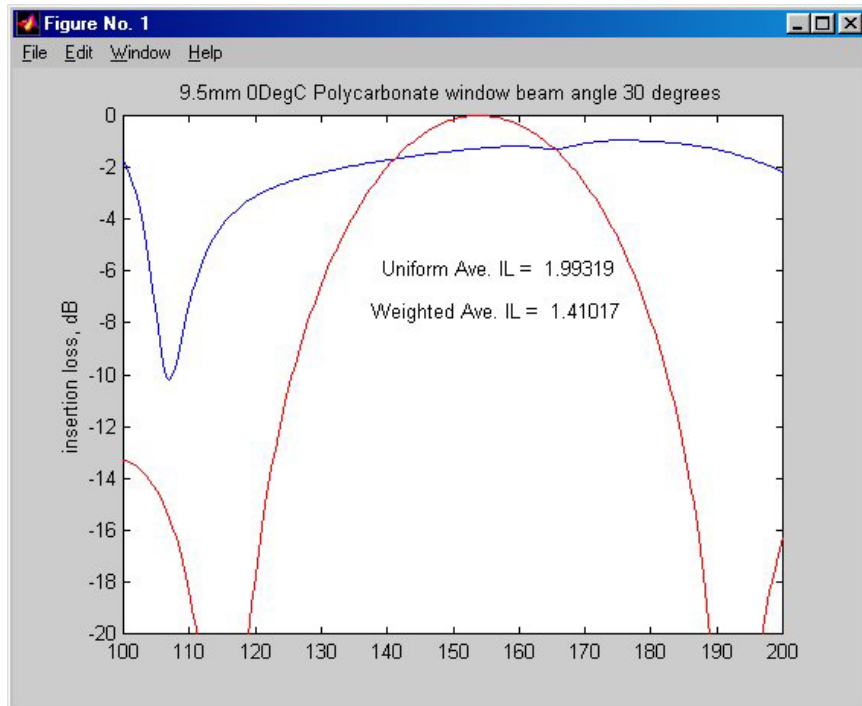


Figure 18. 150 kHz Insertion Loss (one-way) with a 9.5mm window at 0°C

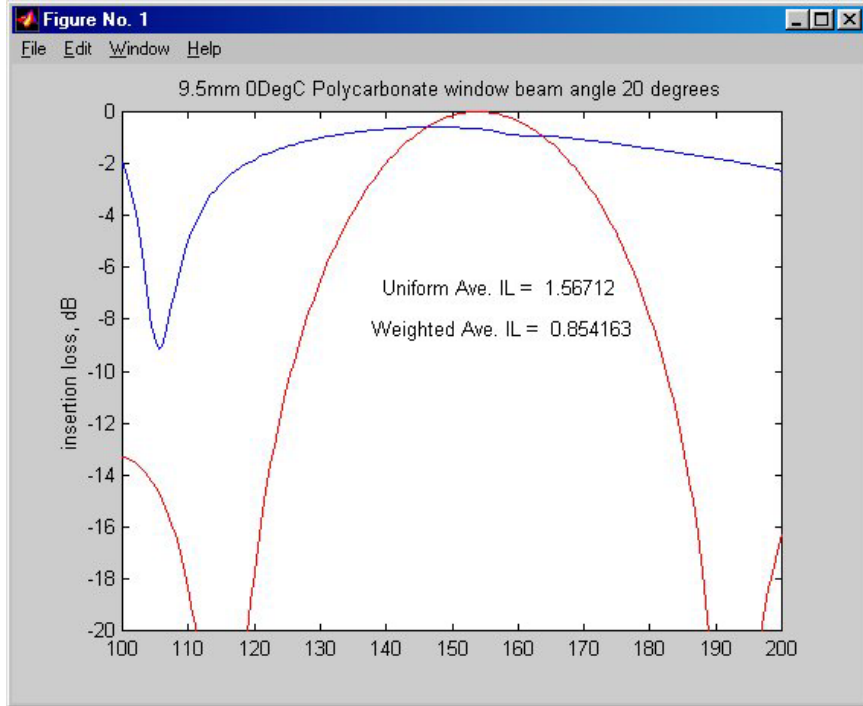


Figure 19. 150 kHz Insertion Loss (one-way) with a 9.5mm window at 0°C

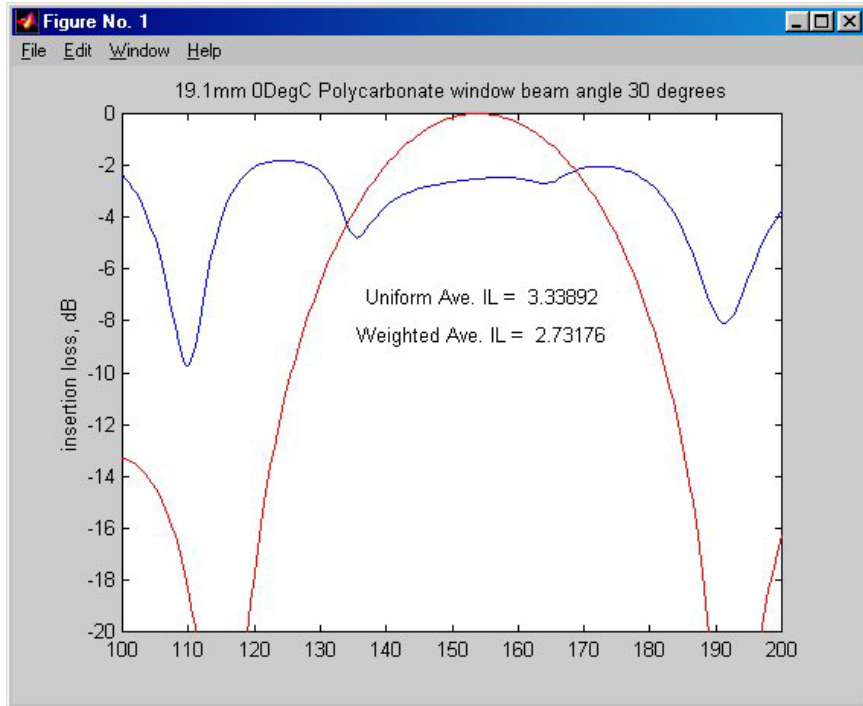


Figure 20. 150 kHz Insertion Loss (one-way) with a 19.1mm window at 0°C

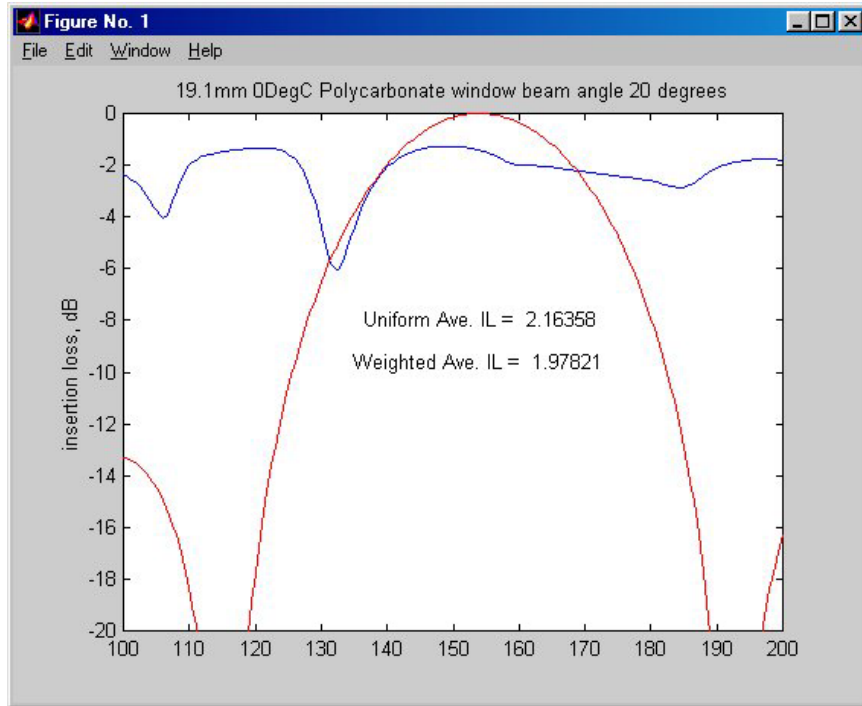
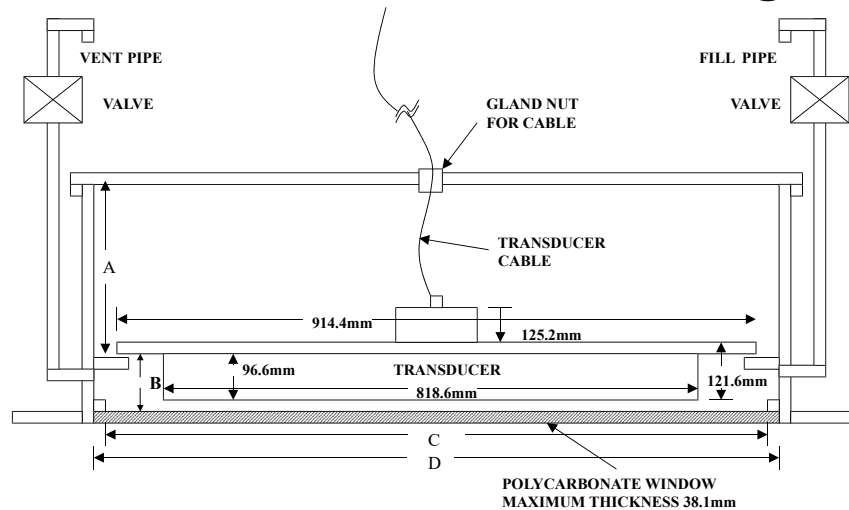


Figure 21. 150 kHz Insertion Loss (one-way) with a 19.1mm window at 0°C

# Conceptual Transducer Well Design

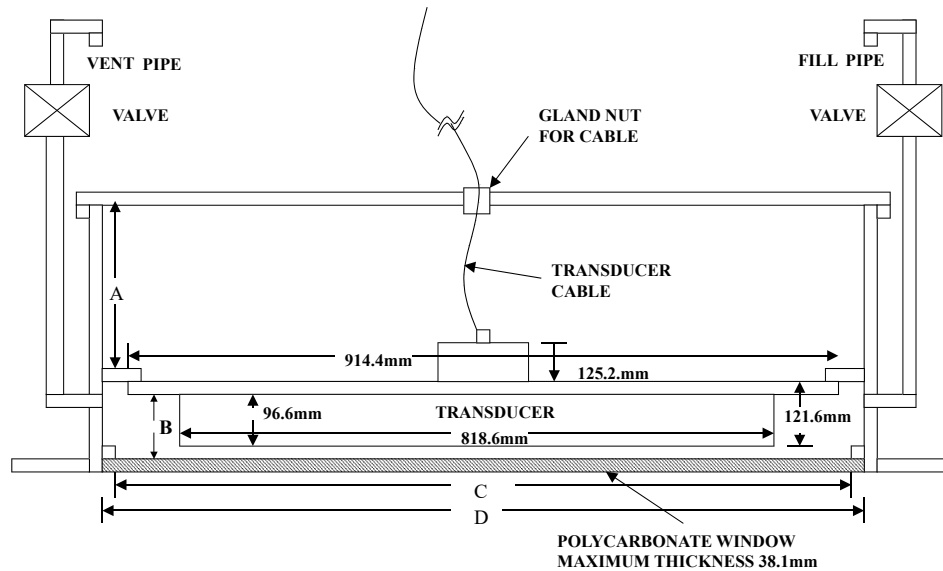


**Figure 22. Inside Vessel Mounting - OS 38 kHz Transducer**

Dimension Letter	Option 1 Minimum Dimension	Option 2 Maximum Dimension
A	384mm	738mm
B	103.0mm	109.5m
C	908mm	921mm
D	1010mm	1023mm

**Special Notes:**

1. No liability is assumed by Teledyne RD Instruments for users using this conceptual well drawing. Users realize that this drawing is provided as a basis for the user to construct their own well. It is expected that the user will have their well design inspected and approved by a naval architect.
2. The top plate of the well is intended as the primary seal for the vessel. The window and transducer can provide additional seal but should not be considered the primary sealing mechanism for the vessel.
3. This conceptual well drawing is designed such that it would be possible to remove the transducer from inside the vessel. For safety, it is strongly recommended that divers fit a steel plate either over the window or in place of the window before installing or removing the transducer.
4. The listed minimum and maximum dimensions are recommendations based on maintaining the clearance for the transducer as well as providing the smallest well possible.
5. The gasket material between the transducer housing and the vessel flange should be used that will both seal and provide electrical isolation between the transducer housing and the vessel flange. Typical gasket material used is silicone rubber 3-6.35mm thick.
6. Inserts in the transducer housing mounting holes may be used to provide additional isolation from vessel.
7. The walls of the well should be coated with a material to absorb reflected sound in the well. Material such as 3mm wet suit material glued to the inside well walls is satisfactory for this purpose.
8. Vent and fill pipes should be above the water line of the vessel and it is recommended that a gate valve be installed to seal off these pipes.
9. Window thickness should not exceed 38.1 mm of Polycarbonate material. Thinner Polycarbonate window is OK.
10. Window faces should be parallel to the transducer face to within 2 degree for best performance; angle should never exceed 5 degrees.

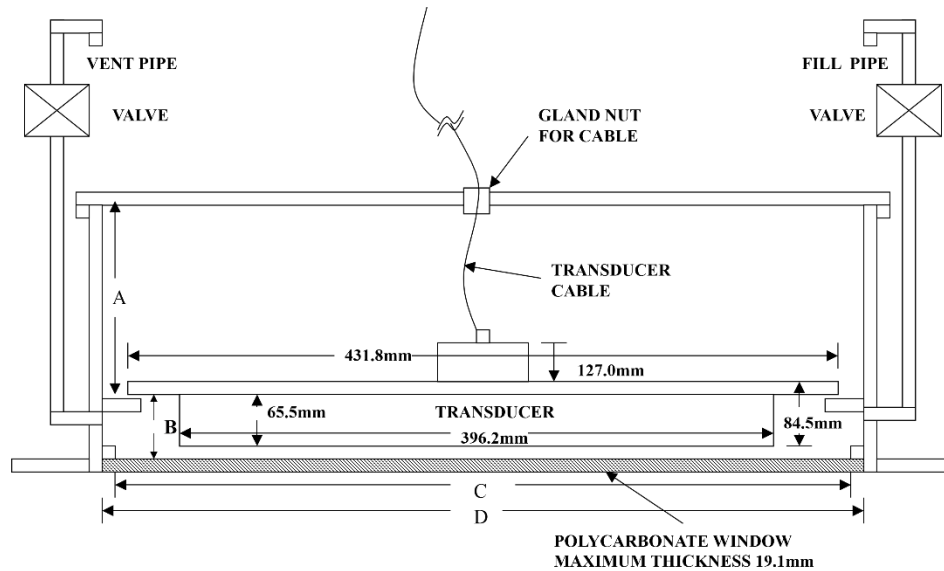


**Figure 23. Underneath Vessel Mounting - OS 38 kHz Transducer**

Dimension Letter	Option 1 Minimum Dimension	Option 2 Maximum Dimension
A	384mm	738mm
B	103.0mm	109.5m
C	1016mm	1016mm
D	1118mm	1118mm

**Special Notes:**

- No liability is assumed by Teledyne RD Instruments for users using this conceptual well drawing. Users realize that this drawing is provided as a basis for the user to construct their own well. It is expected that the user will have their well design inspected and approved by a naval architect.
- The top plate of the well is intended as the primary seal for the vessel. The window and transducer can provide additional seal but should not be considered the primary sealing mechanism for the vessel.
- This conceptual well drawing is designed such that it would be possible to remove the transducer from beneath the vessel while in dry dock.
- The listed minimum and maximum dimensions are recommendations based on maintaining the clearance for the transducer as well as providing the smallest well possible.
- The gasket material between the transducer housing and the vessel flange should be used that will both seal and provide electrical isolation between the transducer housing and the vessel flange. Typical gasket material used is silicone rubber 3-6.35mm thick.
- Inserts in the transducer housing mounting holes may be used to provide additional isolation from vessel.
- The walls of the well should be coated with a material to absorb reflected sound in the well. Material such as 3mm wet suit material glued to the inside well walls is satisfactory for this purpose.
- Vent and fill pipes should be above the water line of the vessel and it is recommended that a gate valve be installed to seal off these pipes.
- Window thickness should not exceed 38.1 mm of Polycarbonate material. Thinner Polycarbonate window is OK.
- Window faces should be parallel to the transducer face to within 2 degree for best performance; angle should never exceed 5 degrees.



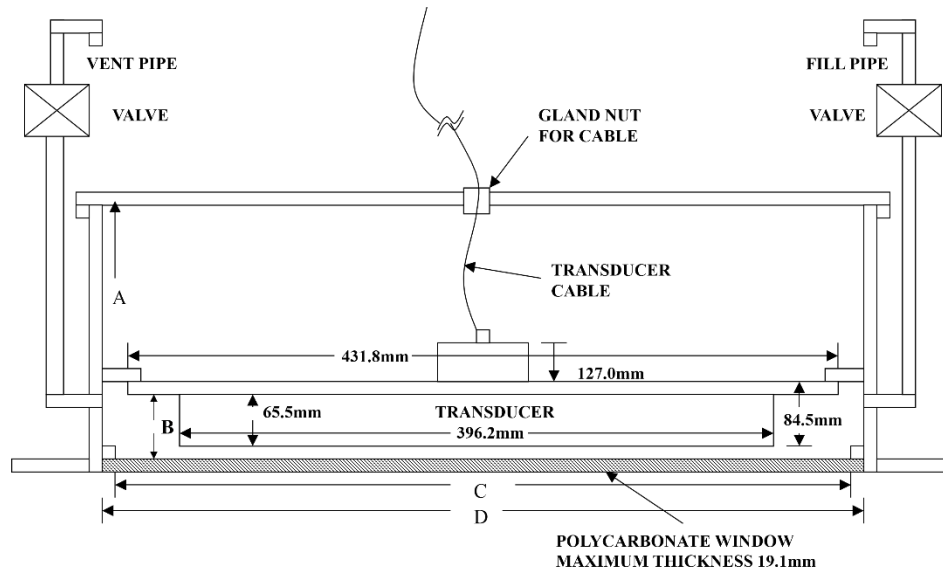
**Figure 24. Inside Vessel Mounting - OS 75 kHz Transducer**

Dimension Letter	Option 1 Minimum Dimension	Option 2 Maximum Dimension
A	384mm	738mm
B	71.9mm	78.2mm
C	461mm	474mm
D	563mm	576mm

**Special Notes:**

- No liability is assumed by Teledyne RD Instruments for users using this conceptual well drawing. Users realize that this drawing is provided as a basis for the user to construct their own well. It is expected that the user will have their well design inspected and approved by a naval architect.
- The top plate of the well is intended as the primary seal for the vessel. The window and transducer can provide additional seal but should not be considered the primary sealing mechanism for the vessel.
- This conceptual well drawing is designed such that it would be possible to remove the transducer from inside the vessel. For safety, it is strongly recommended that divers fit a steel plate either over the window or in place of the window before installing or removing the transducer.
- The listed minimum and maximum dimensions are recommendations based on maintaining the clearance for the transducer as well as providing the smallest well possible.
- The gasket material between the transducer housing and the vessel flange should be used that will both seal and provide electrical isolation between the transducer housing and the vessel flange. Typical gasket material used is silicone rubber 3-6.35mm thick.
- Inserts in the transducer housing mounting holes may be used to provide additional isolation from vessel.
- The walls of the well should be coated with a material to absorb reflected sound in the well. Material such as 3mm wet suit material glued to the inside well walls is satisfactory for this purpose.
- Vent and fill pipes should be above the water line of the vessel and it is recommended that a gate valve be installed to seal off these pipes.
- Window thickness should not exceed 25.4 mm of Polycarbonate material. Thinner Polycarbonate window is OK.
- Window faces should be parallel to the transducer face to within 2 degree for best performance; angle should never exceed 5 degrees.



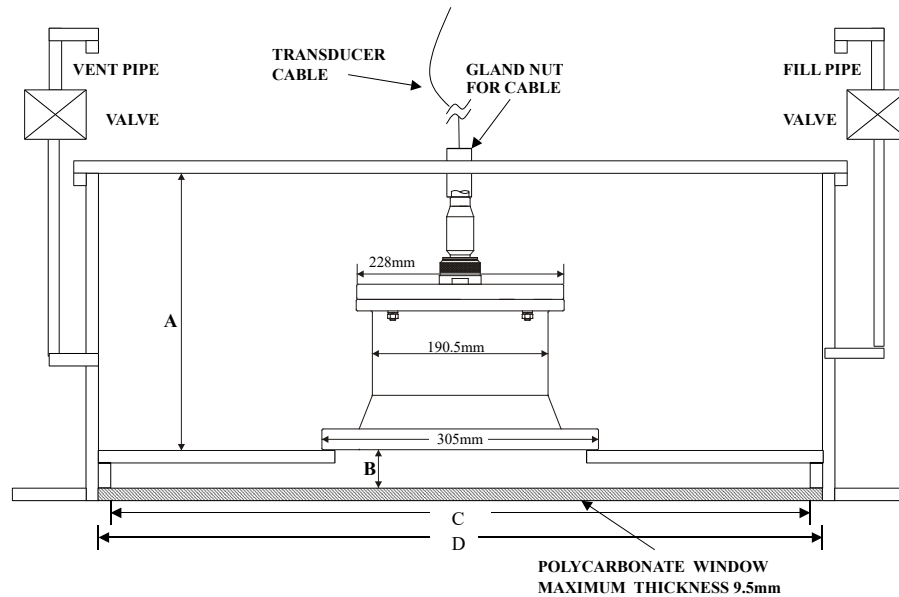


**Figure 25. Underneath Vessel Mounting - OS 75 kHz Transducer**

Dimension Letter	Option 1 Minimum Dimension	Option 2 Maximum Dimension
A	384mm	738mm
B	71.9mm	78.2mm
C	533.4mm	533.4mm
D	635mm	635mm

**Special Notes:**

1. No liability is assumed by Teledyne RD Instruments for users using this conceptual well drawing. Users realize that this drawing is provided as a basis for the user to construct their own well. It is expected that the user will have their well design inspected and approved by a naval architect.
2. The top plate of the well is intended as the primary seal for the vessel. The window and transducer can provide additional seal but should not be considered the primary sealing mechanism for the vessel.
3. This conceptual well drawing is designed such that it would be possible to remove the transducer from beneath the vessel while in dry dock.
4. The listed minimum and maximum dimensions are recommendations based on maintaining the clearance for the transducer as well as providing the smallest well possible.
5. The gasket material between the transducer housing and the vessel flange should be used that will both seal and provide electrical isolation between the transducer housing and the vessel flange. Typical gasket material used is silicone rubber 3-6.35mm thick.
6. Inserts in the transducer housing mounting holes may be used to provide additional isolation from vessel.
7. The walls of the well should be coated with a material to absorb reflected sound in the well. Material such as 3mm wet suit material glued to the inside well walls is satisfactory for this purpose.
8. Vent and fill pipes should be above the water line of the vessel and it is recommended that a gate valve be installed to seal off these pipes.
9. Window thickness should not exceed 25.4 mm of Polycarbonate material. Thinner Polycarbonate window is OK.
10. Window faces should be parallel to the transducer face to within 2 degree for best performance; angle should never exceed 5 degrees.

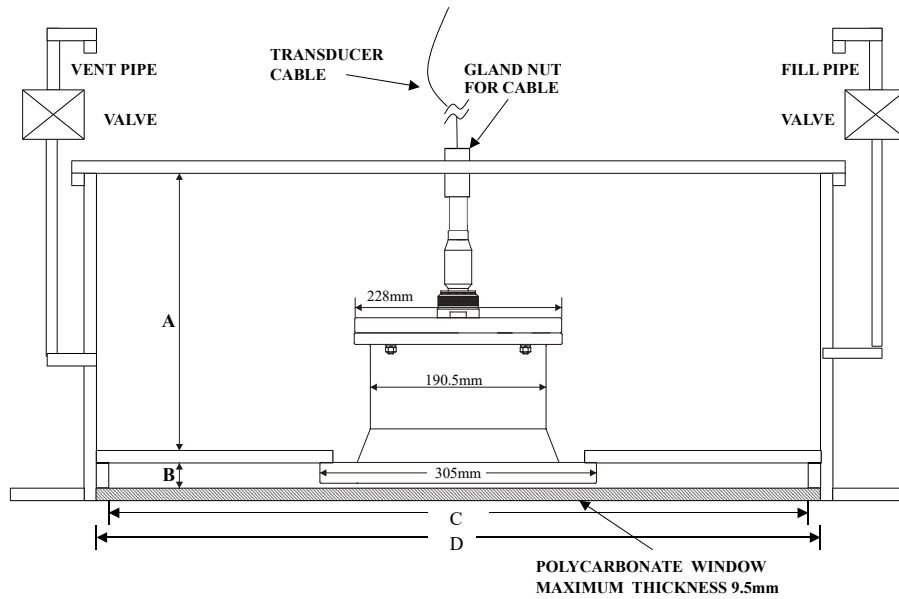


**Figure 26. Inside Vessel Mounting - OS 150 kHz Flanged Transducer**

Dimension Letter	Option 1 Minimum Dimension	Option 2 Maximum Dimension
A	384mm	738mm
B	6.5mm	13mm
C	255mm	268mm
D	357mm	370mm

**Special Notes:**

- No liability is assumed by Teledyne RD Instruments for users using this conceptual well drawing. Users realize that this drawing is provided as a basis for the user to construct their own well. It is expected that the user will have their well design inspected and approved by a naval architect.
- The top plate of the well is intended as the primary seal for the vessel. The window and transducer can provide additional seal but should not be considered the primary sealing mechanism for the vessel.
- This conceptual well drawing is designed such that it would be possible to remove the transducer from inside the vessel. For safety, it is strongly recommended that divers fit a steel plate either over the window or in place of the window before installing or removing the transducer.
- The listed minimum and maximum dimensions are recommendations based on maintaining the clearance for the transducer as well as providing the smallest well possible.
- The gasket material between the transducer housing and the vessel flange should be used that will both seal and provide electrical isolation between the transducer housing and the vessel flange. Typical gasket material used is silicone rubber 3-6.35mm thick.
- Inserts in the transducer housing mounting holes may be used to provide additional isolation from vessel.
- The walls of the well should be coated with a material to absorb reflected sound in the well. Material such as 3mm wet suit material glued to the inside well walls is satisfactory for this purpose.
- Vent and fill pipes should be above the water line of the vessel and it is recommended that a gate valve be installed to seal off these pipes.
- Window thickness should not exceed 9.5 mm of Polycarbonate material. Thinner Polycarbonate window is OK.
- Window faces should be parallel to the transducer face to within 2 degree for best performance; angle should never exceed 5 degrees.



**Figure 27. Underneath Vessel Mounting - OS 150 kHz Flanged Transducer**

Dimension Letter	Option 1 Minimum Dimension	Option 2 Maximum Dimension
A	361mm	715mm
B	29mm	36mm
C	255mm	268mm
D	357mm	370mm

**Special Notes:**

- No liability is assumed by Teledyne RD Instruments for users using this conceptual well drawing. Users realize that this drawing is provided as a basis for the user to construct their own well. It is expected that the user will have their well design inspected and approved by a naval architect.
- The top plate of the well is intended as the primary seal for the vessel. The window and transducer can provide additional seal but should not be considered the primary sealing mechanism for the vessel.
- This conceptual well drawing is designed such that it would be possible to remove the transducer from beneath the vessel while in dry dock.
- The listed minimum and maximum dimensions are recommendations based on maintaining the clearance for the transducer as well as providing the smallest well possible.
- The gasket material between the transducer housing and the vessel flange should be used that will both seal and provide electrical isolation between the transducer housing and the vessel flange. Typical gasket material used is silicone rubber 3-6.35mm thick.
- Inserts in the transducer housing mounting holes may be used to provide additional isolation from vessel.
- The walls of the well should be coated with a material to absorb reflected sound in the well. Material such as 3mm wet suit material glued to the inside well walls is satisfactory for this purpose.
- Vent and fill pipes should be above the water line of the vessel and it is recommended that a gate valve be installed to seal off these pipes.
- Window thickness should not exceed 9.5 mm of Polycarbonate material. Thinner Polycarbonate window is OK.
- Window faces should be parallel to the transducer face to within 2 degree for best performance; angle should never exceed 5 degrees.

# Chapter 4

## SPECIFICATIONS



In this chapter, you will learn:

- Specifications
- Outline installation drawings

# Specification Overview

A brief review of ADCP operation may help you understand the specifications listed in this section.



The specifications and dimensions listed in this section are subject to change without notice.

The ADCP emits an acoustic pulse called a PING. Scatterers that float ambiently with the water currents reflect some of the energy from the ping back to the ADCP. The ADCP uses the return signal to calculate a velocity. The energy in this signal is the *echo intensity*. Echo intensity is sometimes used to determine information about the scatterers.

The velocity calculated from each ping has a *statistical uncertainty*; however, each ping is an independent sample. The ADCP reduces this statistical uncertainty by averaging a collection of pings. A collection of pings averaged together is an *ensemble*. The ADCP's maximum *ping rate* limits the time required to reduce the statistical uncertainty to acceptable levels.

The ADCP does not measure velocity at a single point; it measures velocities throughout the water column. The ADCP measures velocities from its transducer head to a specified range and divides this range into uniform segments called *depth cells* (or *bins*). The collection of depth cells yields a *profile*. The ADCP produces two profiles, one for velocity, and one for echo intensity.

The ADCP calculates velocity data relative to the ADCP. The velocity data has both speed and direction information. If the ADCP is moving, and is within range of the bottom, it can obtain a velocity from returns off the bottom. This is called *bottom tracking*. The bottom track information can be used to calculate the absolute velocity of the water. The ADCP can get absolute direction information from a heading sensor.

The following tables list the specifications for the Ocean Surveyor/Observer ADCP. About the specifications:

- a. All these specifications assume minimal ADCP motion - pitch, roll, heave, rotation, and translation.
- b. Except where noted, this specification table applies to typical setups and conditions. Typical setups use the default input values for each parameter (exceptions include Pings Per Ensemble and Number of Depth Cells). Typical conditions assume uniform seawater velocities at a given depth, moderate shear, moderate ADCP motion, and typical echo intensity levels.
- c. The total measurement error of the ADCP is the sum of:
  - Long-term instrument error (as limited by instrument accuracy).
  - The remaining statistical uncertainty after averaging.
  - Errors introduced by measurement of ADCP heading and motion.
- d. Because individual pings are independent, the statistical uncertainty of the measurement can be reduced according to the equation:

Statistical Uncertainty for One Ping

$$\frac{\text{Statistical Uncertainty for One Ping}}{\sqrt{\text{Number of Pings}}}$$

# Water Velocity Specifications

**Table 8: Water Profiling – Long Range Mode**

Frequency	Vertical Resolution Cell Size (m) <sup>3</sup>	Max Range (m) <sup>1</sup>	Precision (cm/s) <sup>2</sup>
38kHz	16	800-1000	30
	24	800-1000	20
75kHz	8	520-650	30
	16	560-700	16
150kHz	4	360-400	30
	8	380-425	16

**Table 9: Water Profiling – High Precision Mode**

Frequency	Vertical Resolution Cell Size (m) <sup>3</sup>	Max Range (m) <sup>1</sup>	Precision (cm/s) <sup>2</sup>
38kHz	16	520-730	15
	24	600-730	10
75kHz	8	310-430	15
	16	350-450	7
150kHz	4	200-250	15
	8	220-275	8

(1) Ranges at 1 to 5 knots ship speed are typical and vary with situation; (2) single-ping standard deviation; (3) user's choice of depth cell size is not limited to the typical values specified.



Ranges are dependent on both background noise levels and environmental issues such as sea state, prop noise, engine noise, sea chest configuration, use of a window, and absorption through the water. The specifications above assume no added background noise from the ship or sea states, and the absorption is based on 4 degree C.

## Profile Parameters

Item	Specification
Velocity Long Term Accuracy:	$\pm 1.0\% \pm 0.5$ cm/s
Velocity Range:	Default setup 22 knots (combined water and vessel speed)
Number of Depth Cells:	1 to 128

**Table 10: Water Profile Maximum Ping Rate**

Frequency (kHz)	Ping Rate (Hz) <sup>1</sup>
38	0.4
75	0.7
150	1.5

Note – Ping rates specified for maximum range in Long Range mode. Shorter ranges allow faster ping rates.

## Bottom Track Specifications

Item	Specification
Bottom Track Precision:	<2 cm/s
Bottom Track Velocity Accuracy:	+/-1% 0.5cm/sec
Bottom Track Range Accuracy:	<+/-2%*



\*Bottom Track Range is slant range divided by the cosine of the beam angle. Accuracy reported excludes errors introduced by changes in the speed of sound profile, errors caused by tilting of the transducer, and by the slope of the bottom.

**Table 11: Maximum Bottom Track Altitude**

Frequency (kHz)	Altitude (m)
38	1,500
75	950
150	540

## Echo Intensity Profile

Item	Specification
Dynamic Range:	80dB
Precision:	±1.5dB
Relative Accuracy:	2.5 dB RMS
Scale Factor:	0.46 dB/count

# Transducer and Hardware Specifications

Item	Specification
Beam angle:	30°
Configuration:	4 beam, Janus
Communications:	RS-422 or RS-232 Hex-ASCII or binary at 1200 to 115,200 baud

## Internal Sensors

Temperature (mounted on transducer)	Specification
Range:	-5 to 45°C
Precision:	±0.1°C
Resolution:	0.03°C
Accuracy:	±0.4°C
Tilt	Specification
Range:	±20°
Accuracy:	±1.0°
Precision:	<0.1°
Resolution:	0.1°
Compass (fluxgate type)	Specification
Accuracy:	±5°
Precision:	<0.1°
Resolution:	0.1°
Maximum tilt:	±15°



# System Power Specifications

**Table 12. Ocean Surveyor/Ocean Observer Electronics Chassis Power**

Item	Specification
Electronics Chassis Input Voltage	90-120VAC or 220-240VAC, 47-63Hz
Electronics Chassis Output Voltage	48VDC 50Amps Max
Input Power (between transmit)	60W Typical
Input Current @ 230VAC	<34Amps rms
Ride through time	20ms
Transient Surge	EN/IEC 1000-4-2 Level 4
Common mode & normal mode	EN/IEC 1000-4-5 Level 3

Recommended UPS 3200Watts (2200Watts Minimum)

**Table 13. Ocean Surveyor/Ocean Observer Transducer Power Requirements**

Item	Specification
ADCP Input Voltage	24-48VDC (48VDC Typical)
Power	1600W peak
Inrush Current	<46A
Transmit Power	1100W typical
Standby Power	2W

# Environmental Specifications

Item	Specification
Operating Temperature, Transducer:	-5 to +45°C, at water depth > 1 meter over transducer face
Operating Temperature, Electronics:	-5 to +45°C
Storage Temperature:	-30 to +60°C, in a shock and vibration free environment
Standard Depth Rating:	100m

# Outline Installation Drawings

The following drawings show the standard Ocean Surveyor/Observer dimensions and weights.

**Table 14: Outline Installation Drawings**

Description	Drawing #
Ocean Surveyor/Observer Electronics Chassis	96A-6000
Ocean Surveyor/Observer 38kHz	96A-6009
Ocean Surveyor/Observer 75kHz	96A-6007
Ocean Surveyor/Observer 75kHz, Wide Flange	96A-6011
Ocean Surveyor/Observer 150kHz	96A-6018
Ocean Surveyor/Observer 150kHz, Flanged	96A-6019

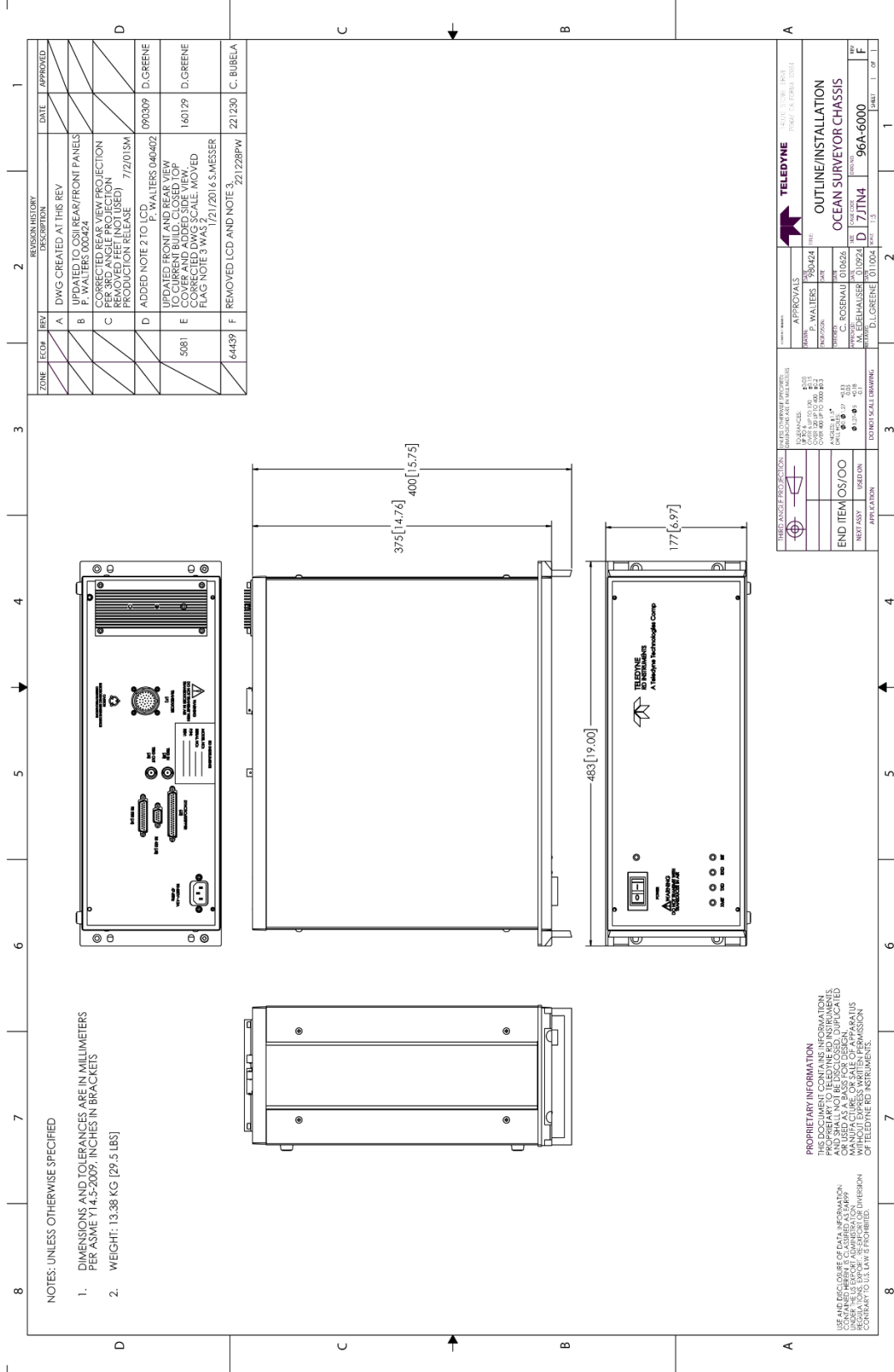


**Outline Installation Drawings are subject to change between manual updates.** When an addition or correction to the manual is needed, an Interim Change Notice (ICN) will be posted to our web site on the Customer Service page (<https://www.teledynemarine.com/support/RDI/technical-manuals>). Please check our web site often.

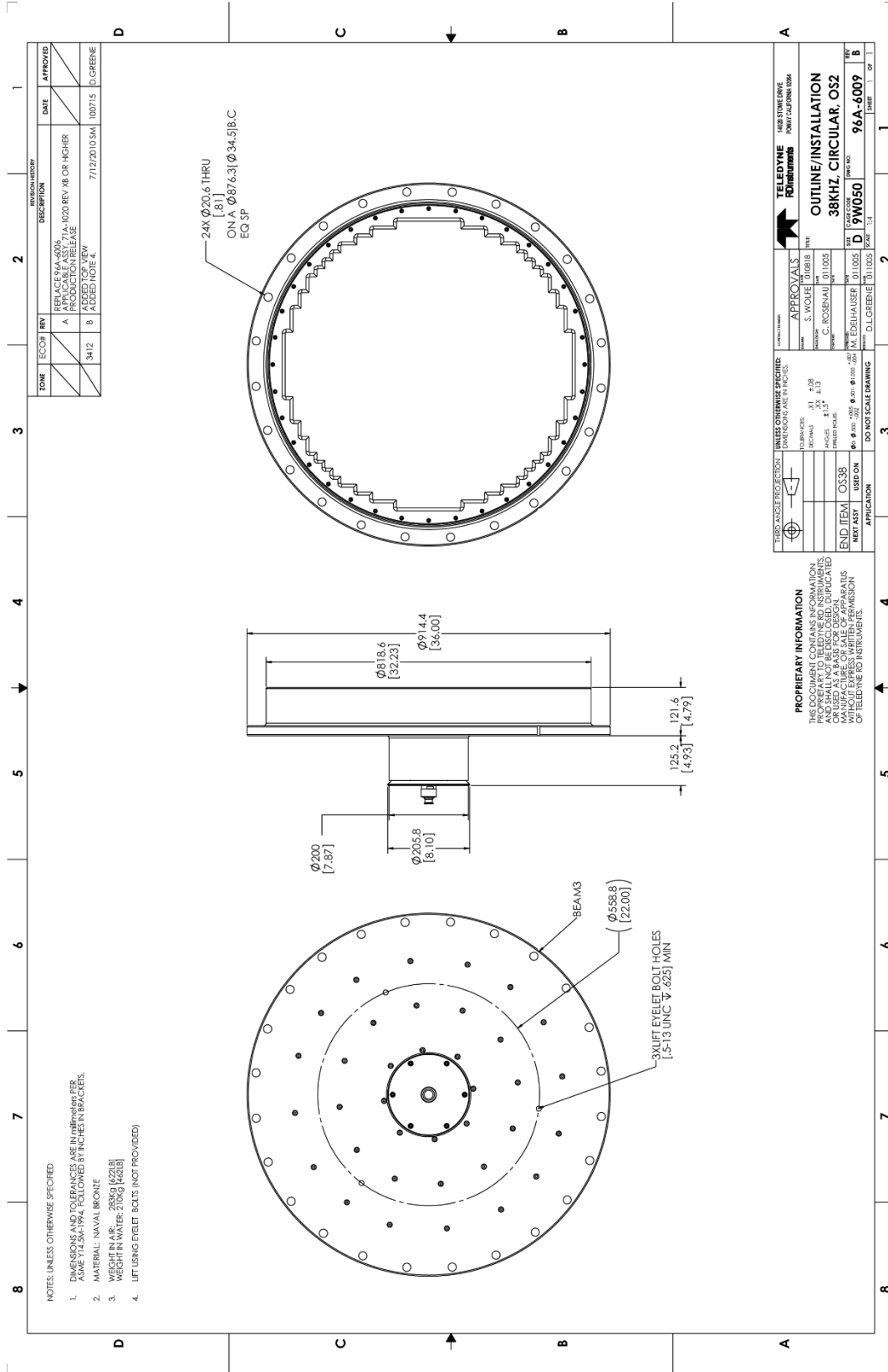


Drawing 96A-6011 will be used for new builds starting in March 2003. For systems built prior to March 2003, use the 96A-6007 drawing.

# Ocean Surveyor/Observer Electronics Chassis - 96A-6000



# Ocean Surveyor/Observer 38 kHz – 96A-6009



NOTES: UNLESS OTHERWISE SPECIFIED

1. DIMENSIONS AND TOLERANCES ARE IN INCHES UNLESS OTHERWISE SPECIFIED.
2. MATERIAL: NAVAL BRONZE
3. WEIGHT IN AIR: 283KG (622LB)
4. LIFT USING EYELET BOLTS (NOT PROVIDED)

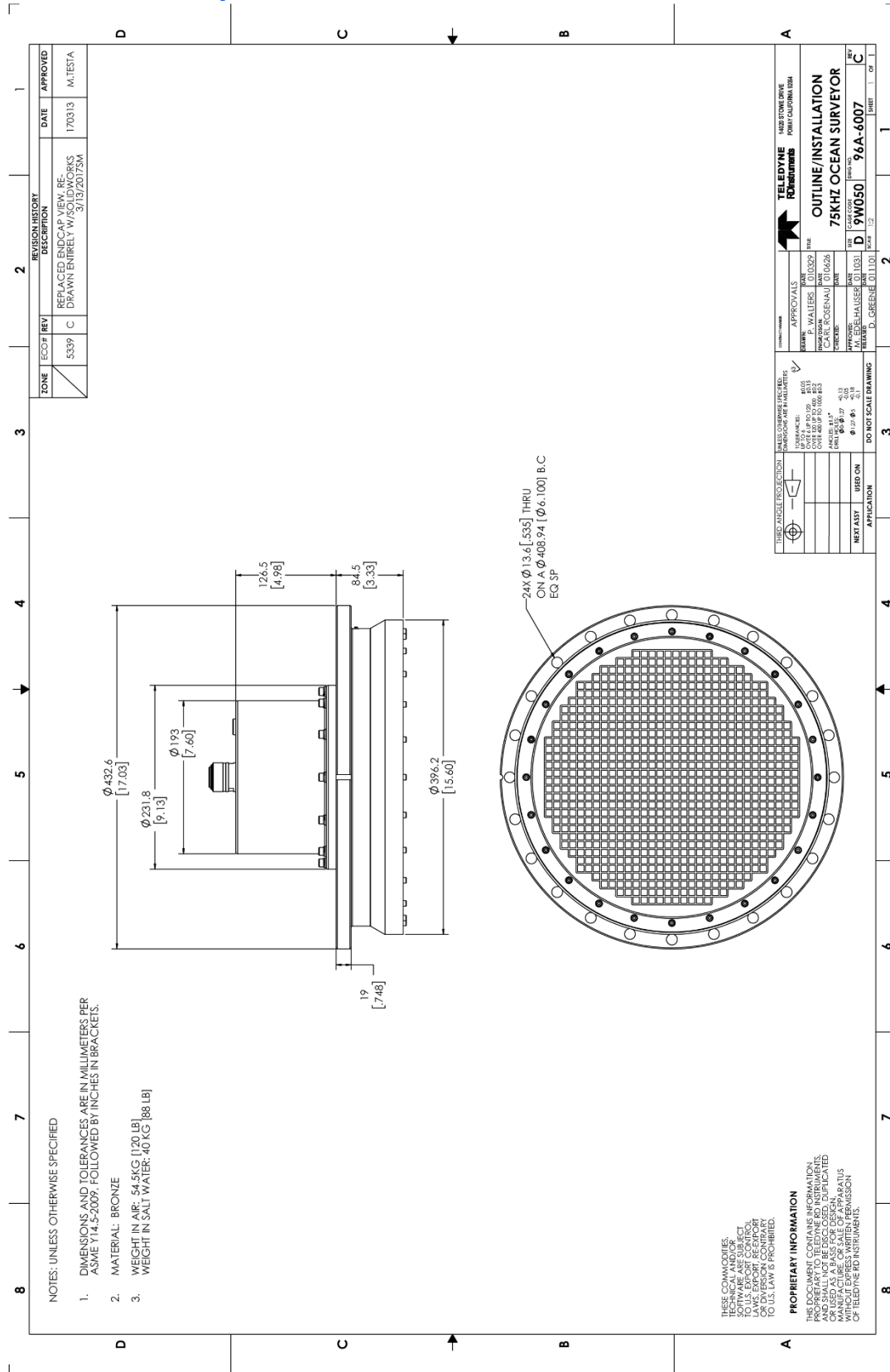
ZONE	ECOM	REV	DESCRIPTION	DATE	APPROVED
	A		REPLACE 96A-6009A APPLICABLE ASSEMBLY WITH 96A-6009B. ADDITIONAL NOTES: 1. ADD TO THE END OF THE DRAWING. 2. ADD TO THE END OF THE DRAWING.	7/12/2010 JSM	D. GREENE
	B	3412	ADDED TOP VIEW		

TELEDYNE ROINSTRUMENTS		1480 STONE DRIVE POMONA, CALIFORNIA 92864	
APPROVALS		DATE	
S. WOLFE	01/08/18		
C. ROSENBAUM	01/10/18		
M. EDLHAUSER	01/10/18		
D. GREENE	01/10/18		
PART NO. 96A-6009		REV. B	
DRAWING NO. 96A-6009		PAGE 1 OF 1	

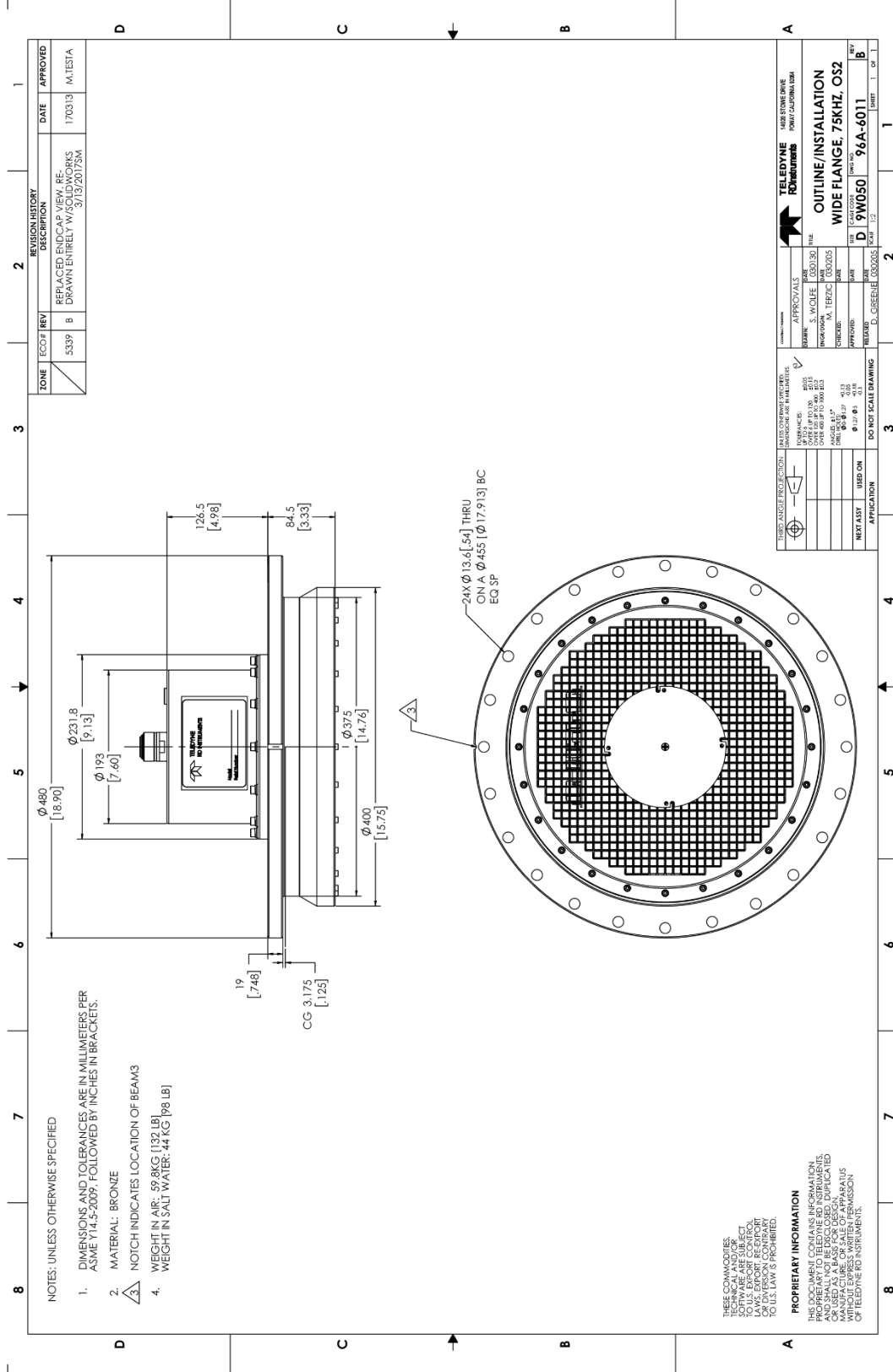
THIRD ANGLE PROJECTION		UNLESS OTHERWISE SPECIFIED	
UNIT	INCHES	TOLERANCES ARE IN INCHES	
FINISHES	AS SHOWN		
THREADS	AS SHOWN		
SPACINGS	AS SHOWN		
ANGLES	AS SHOWN		
PROJECTIONS	AS SHOWN		
END ITEM	OS38	DO NOT SCALE DRAWING	
NEXT ASSY	USED ON	APPLICATION	

**PROPRIETARY INFORMATION**  
 THIS DOCUMENT CONTAINS PROPRIETARY INFORMATION OF TELEDYNE ROINSTRUMENTS. IT IS THE PROPERTY OF TELEDYNE ROINSTRUMENTS AND SHALL NOT BE DISCLOSED, REPRODUCED, COPIED, OR TRANSMITTED IN ANY FORM OR BY ANY MEANS, WITHOUT THE WRITTEN PERMISSION OF TELEDYNE ROINSTRUMENTS.

# Ocean Surveyor/Observer 75 kHz - 96A-6007

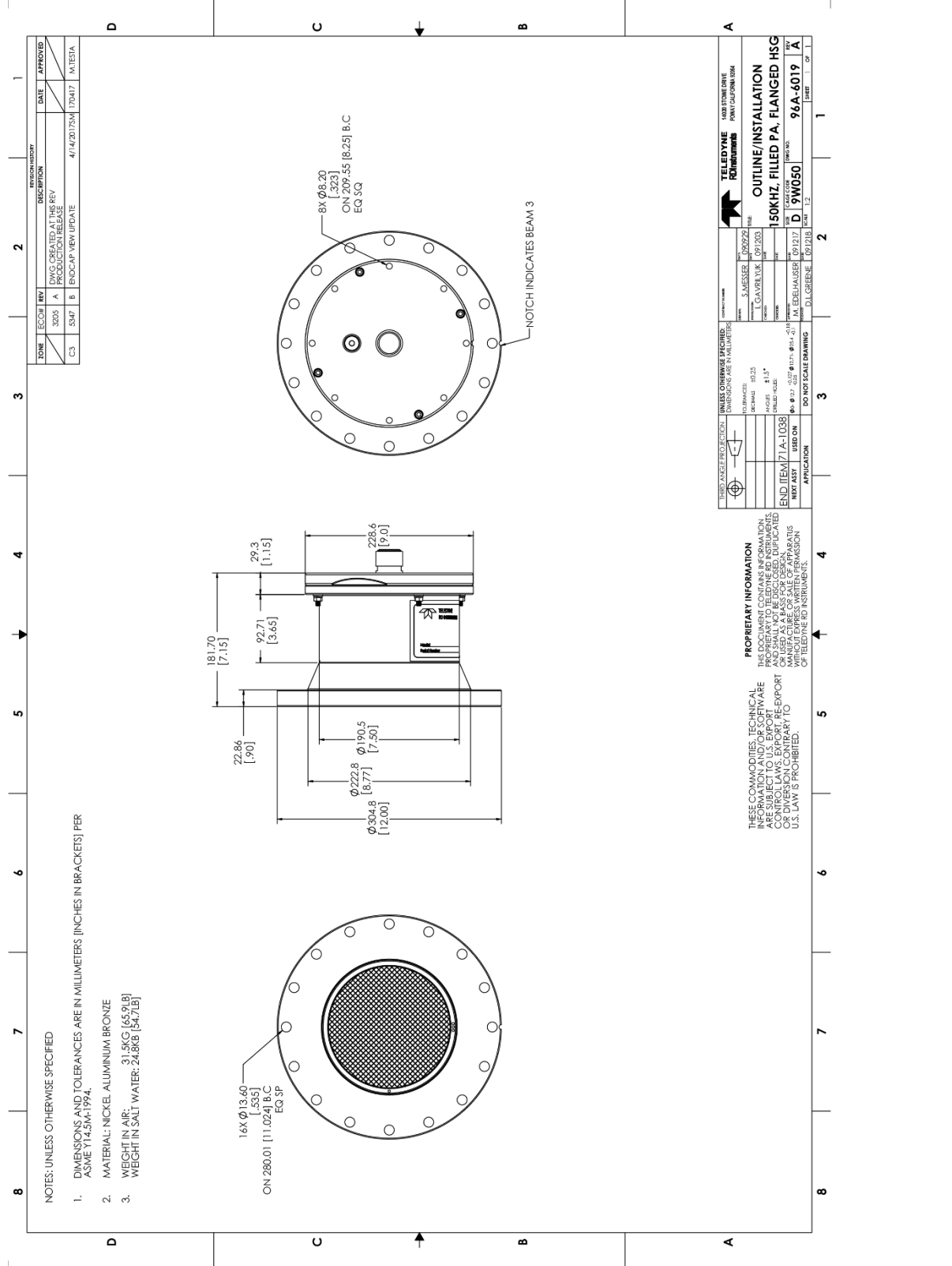


# Ocean Surveyor/Observer 75 kHz, Wide Flange - 96A-6011





# Ocean Surveyor/Observer 150 kHz, Flanged – 96A-6019



ZONE	ECOM	REV	DESCRIPTION	DATE	APPROVED
C3	SAP	B	ENDCAP VIEW UPDATE	4/14/2015M	MATEIA
		A	DWG CREATED AT THE REV		
		3005	PRODUCTION RELEASE	7/24/17	

TELEDYNE		1400 STONE DRIVE		POMONA, CALIFORNIA 92864	
<b>TELEDYNE</b>					
<b>REPERFORM</b>					
UNLESS OTHERWISE SPECIFIED: DIMENSIONS ARE IN MILLIMETERS					
THIRD ANGLE PROJECTION	DESIGNER	DATE	REV	REV	REV
	J. MESSER	09/20/22			
	L. GAVER, V.P.	09/20/23			
END ITEM 71A-1038					
REV A01 0327 04-11-21					
REV A02 0327 04-11-21					
REV A03 0327 04-11-21					
REV A04 0327 04-11-21					
REV A05 0327 04-11-21					
REV A06 0327 04-11-21					
REV A07 0327 04-11-21					
REV A08 0327 04-11-21					
REV A09 0327 04-11-21					
REV A10 0327 04-11-21					
REV A11 0327 04-11-21					
REV A12 0327 04-11-21					
REV A13 0327 04-11-21					
REV A14 0327 04-11-21					
REV A15 0327 04-11-21					
REV A16 0327 04-11-21					
REV A17 0327 04-11-21					
REV A18 0327 04-11-21					
REV A19 0327 04-11-21					
REV A20 0327 04-11-21					
REV A21 0327 04-11-21					
REV A22 0327 04-11-21					
REV A23 0327 04-11-21					
REV A24 0327 04-11-21					
REV A25 0327 04-11-21					
REV A26 0327 04-11-21					
REV A27 0327 04-11-21					
REV A28 0327 04-11-21					
REV A29 0327 04-11-21					
REV A30 0327 04-11-21					
REV A31 0327 04-11-21					
REV A32 0327 04-11-21					
REV A33 0327 04-11-21					
REV A34 0327 04-11-21					
REV A35 0327 04-11-21					
REV A36 0327 04-11-21					
REV A37 0327 04-11-21					
REV A38 0327 04-11-21					
REV A39 0327 04-11-21					
REV A40 0327 04-11-21					
REV A41 0327 04-11-21					
REV A42 0327 04-11-21					
REV A43 0327 04-11-21					
REV A44 0327 04-11-21					
REV A45 0327 04-11-21					
REV A46 0327 04-11-21					
REV A47 0327 04-11-21					
REV A48 0327 04-11-21					
REV A49 0327 04-11-21					
REV A50 0327 04-11-21					
REV A51 0327 04-11-21					
REV A52 0327 04-11-21					
REV A53 0327 04-11-21					
REV A54 0327 04-11-21					
REV A55 0327 04-11-21					
REV A56 0327 04-11-21					
REV A57 0327 04-11-21					
REV A58 0327 04-11-21					
REV A59 0327 04-11-21					
REV A60 0327 04-11-21					
REV A61 0327 04-11-21					
REV A62 0327 04-11-21					
REV A63 0327 04-11-21					
REV A64 0327 04-11-21					
REV A65 0327 04-11-21					
REV A66 0327 04-11-21					
REV A67 0327 04-11-21					
REV A68 0327 04-11-21					
REV A69 0327 04-11-21					
REV A70 0327 04-11-21					
REV A71 0327 04-11-21					
REV A72 0327 04-11-21					
REV A73 0327 04-11-21					
REV A74 0327 04-11-21					
REV A75 0327 04-11-21					
REV A76 0327 04-11-21					
REV A77 0327 04-11-21					
REV A78 0327 04-11-21					
REV A79 0327 04-11-21					
REV A80 0327 04-11-21					
REV A81 0327 04-11-21					
REV A82 0327 04-11-21					
REV A83 0327 04-11-21					
REV A84 0327 04-11-21					
REV A85 0327 04-11-21					
REV A86 0327 04-11-21					
REV A87 0327 04-11-21					
REV A88 0327 04-11-21					
REV A89 0327 04-11-21					
REV A90 0327 04-11-21					
REV A91 0327 04-11-21					
REV A92 0327 04-11-21					
REV A93 0327 04-11-21					
REV A94 0327 04-11-21					
REV A95 0327 04-11-21					
REV A96 0327 04-11-21					
REV A97 0327 04-11-21					
REV A98 0327 04-11-21					
REV A99 0327 04-11-21					
REV A100 0327 04-11-21					
REV A101 0327 04-11-21					
REV A102 0327 04-11-21					
REV A103 0327 04-11-21					
REV A104 0327 04-11-21					
REV A105 0327 04-11-21					
REV A106 0327 04-11-21					
REV A107 0327 04-11-21					
REV A108 0327 04-11-21					
REV A109 0327 04-11-21					
REV A110 0327 04-11-21					
REV A111 0327 04-11-21					
REV A112 0327 04-11-21					
REV A113 0327 04-11-21					
REV A114 0327 04-11-21					
REV A115 0327 04-11-21					
REV A116 0327 04-11-21					
REV A117 0327 04-11-21					
REV A118 0327 04-11-21					
REV A119 0327 04-11-21					
REV A120 0327 04-11-21					
REV A121 0327 04-11-21					
REV A122 0327 04-11-21					
REV A123 0327 04-11-21					
REV A124 0327 04-11-21					
REV A125 0327 04-11-21					
REV A126 0327 04-11-21					
REV A127 0327 04-11-21					
REV A128 0327 04-11-21					
REV A129 0327 04-11-21					
REV A130 0327 04-11-21					
REV A131 0327 04-11-21					
REV A132 0327 04-11-21					
REV A133 0327 04-11-21					
REV A134 0327 04-11-21					
REV A135 0327 04-11-21					
REV A136 0327 04-11-21					
REV A137 0327 04-11-21					
REV A138 0327 04-11-21					
REV A139 0327 04-11-21					
REV A140 0327 04-11-21					
REV A141 0327 04-11-21					
REV A142 0327 04-11-21					
REV A143 0327 04-11-21					
REV A144 0327 04-11-21					
REV A145 0327 04-11-21					
REV A146 0327 04-11-21					
REV A147 0327 04-11-21					
REV A148 0327 04-11-21					
REV A149 0327 04-11-21					
REV A150 0327 04-11-21					
REV A151 0327 04-11-21					
REV A152 0327 04-11-21					
REV A153 0327 04-11-21					
REV A154 0327 04-11-21					
REV A155 0327 04-11-21					
REV A156 0327 04-11-21					
REV A157 0327 04-11-21					
REV A158 0327 04-11-21					
REV A159 0327 04-11-21					
REV A160 0327 04-11-21					
REV A161 0327 04-11-21					
REV A162 0327 04-11-21					
REV A163 0327 04-11-21					
REV A164 0327 04-11-21					
REV A165 0327 04-11-21					
REV A166 0327 04-11-21					
REV A167 0327 04-11-21					
REV A168 0327 04-11-21					
REV A169 0327 04-11-21					
REV A170 0327 04-11-21					
REV A171 0327 04-11-21					
REV A172 0327 04-11-21					
REV A173 0327 04-11-21					
REV A174 0327 04-11-21					
REV A175 0327 04-11-21					
REV A176 0327 04-11-21					
REV A177 0327 04-11-21					
REV A178 0327 04-11-21					
REV A179 0327 04-11-21					
REV A180 0327 04-11-21					
REV A181 0327 04-11-21					
REV A182 0327 04-11-21					
REV A183 0327 04-11-21					
REV A184 0327 04-11-21					
REV A185 0327 04-11-21					
REV A186 0327 04-11-21					
REV A187 0327 04-11-21					
REV A188 0327 04-11-21					
REV A189 0327 04-11-21					
REV A190 0327 04-11-21					
REV A191 0327 04-11-21					
REV A192 0327 04-11-21					
REV A193 0327 04-11-21					
REV A194 0327 04-11-21					
REV A195 0327 04-11-21					
REV A196 0327 04-11-21					
REV A197 0327 04-11-21					
REV A198 0327 04-11-21					
REV A199 0327 04-11-21					
REV A200 0327 04-11-21					



# Appendix **A**

## DRY CONNECTOR INSTALLATION



In this chapter, you will learn:

- How to install the dry-end connector
- Testing the I/O cable

# Dry Connector Installation Overview

The Ocean Surveyor/Observer uses a cable to connect the transducer assembly to the rack mounted electronics chassis. This cable is typically pulled through the vessel inside of conduits that may be unable to accommodate the dry end connector and its molding. Therefore, many customers purchase the cable without the dry end connector attached. Once the cable has been installed (pulled through the vessel) the dry connector is attached. The following procedure explains the steps required to attach the dry end connector.

## Tools and Equipment Requirements (TRDI Supplied)

- OS ADCP transducer cable pigtail kit (dry end in bag)
  - 73AK6024-xxx – Straight wet and dry end
  - 73AK6025-xxx – Straight wet, angled dry end
  - 73AK6026-xxx – Angled wet, straight dry end
  - 73AK6027-xxx – Angled wet and dry end
- OS 41-pin dry end cable connector 85106RC2041P50 with pins



The cable clamp that is included in this bag is not used. Make sure the white plastic ring is slipped over the end of the connector.

- Cable flair
- Cable shell (straight or angled depending on kit ordered)
- Heat shrink tubing 1" OD x 12" length
- Potting compound, DP270

## Tools and Equipment Requirements (User Supplied)

- Standard wire strippers for 18 - 22 awg wire.
- Wire cutters.
- 1/16" Teflon tubing
- 1/4" 2:1 polyolefin heat shrink tubing.
- 22 awg green Teflon wire
- EPX™ Plus II Applicator W 2:1 and 1:1 Plunger Model 9170 for DP270 application
- 3M™ Scotch-Weld™ EPX™ 10:1 Mixing Nozzle for DP270 application



The following items can be purchased from:

Daniels Manufacturing Corporation  
 526 Thorpe Road  
 Orlando, FL 32824  
 Phone: (407) 855-6161  
 Fax: (407) 855-6884  
 Web Site: [www.dmctools.com](http://www.dmctools.com)

- Crimping tool: AF8 M22520/1-01
- Turret Head TH1A: M22520/1-02
- Extraction Tool: MS24256R20 (DRK20)
- Insertion Tool: MS24256A20 (DAK20)

# Installation Instructions

To install the dry end cable connector:

1. Slide the 1" OD heat shrink tubing, cable flair, and cable shell onto the cable.



If you are using the angled cable shell, connect the two parts of the shell using the 4-40x7/8 socket head screws.

2. Trim approximately 10.16 cm (4.0") of the outer black polyurethane jacket from the end of the cable.

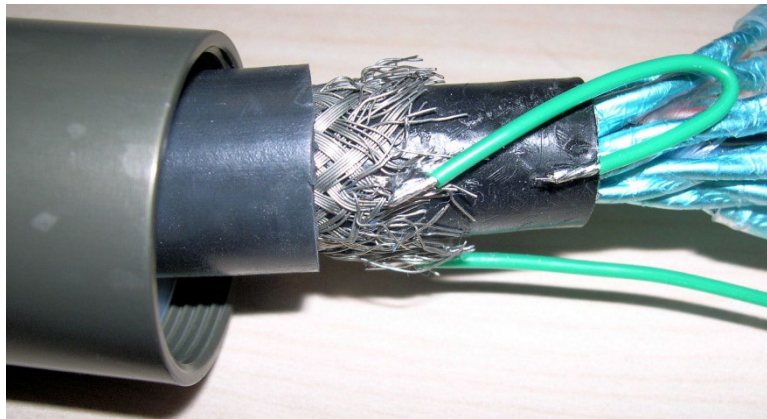


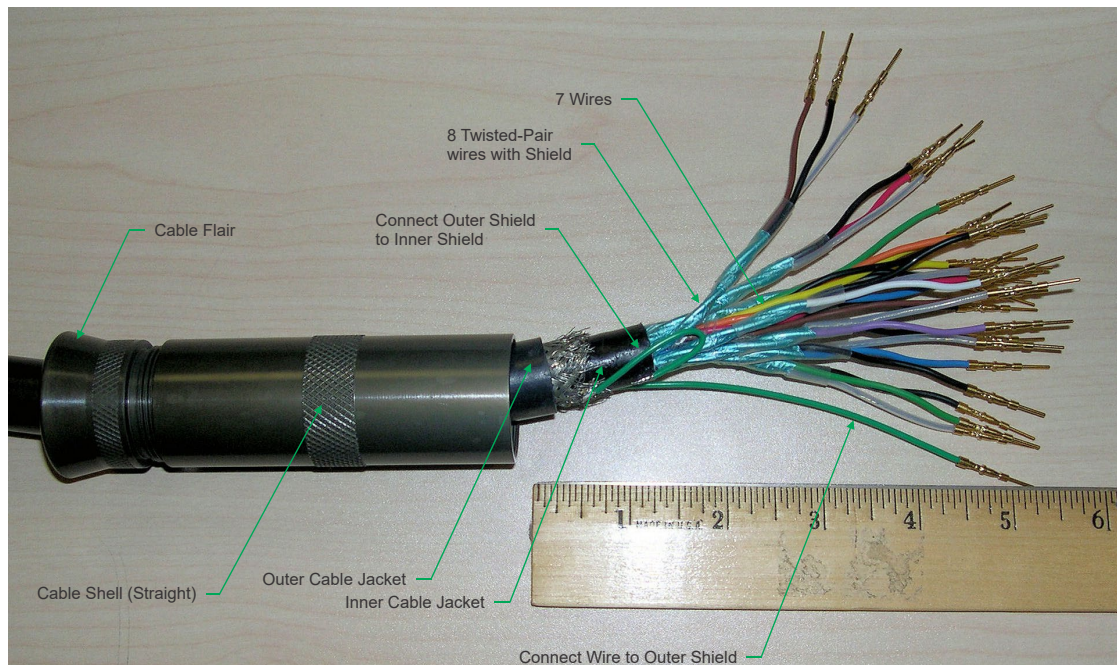
Be careful that you do not cut off the braided outer shield.

3. Trim approximately 8.9 cm (3.5") of the braided outer shield from the end of the cable.
4. Trim approximately 7.62 cm (3.0") of the inner black polyurethane jacket from the end of the cable.
5. Remove the protective foil (aluminum and Mylar) wrap from the remaining bundled wires. Within the bundle, locate the bare inner shield wire. **DO NOT** cut off the inner shield wire.
6. Solder the outer shield and inner shield together using a short wire.
7. Solder a 22 AWG green wire to the outer shield. Using the crimping tool, crimp a pin on the end of the shield wire. Squeeze the crimping tool handles firmly until a click is heard. The crimping tool should spring open when released.



This procedure assumes that the user is familiar with good soldering practices and will use an approved soldering station.





**Figure 28. Pigtail Cable Construction**

8. Strip back the insulation on the single wires approximately 6 mm (0.25 in.). Insert the wire into the pin's crimp barrel and ensure that it has penetrated correctly and all wire strands are inside the pin. Using the crimping tool, crimp a pin on each wire. Squeeze the crimping tool handles firmly until a click is heard. The crimping tool should spring open when released.



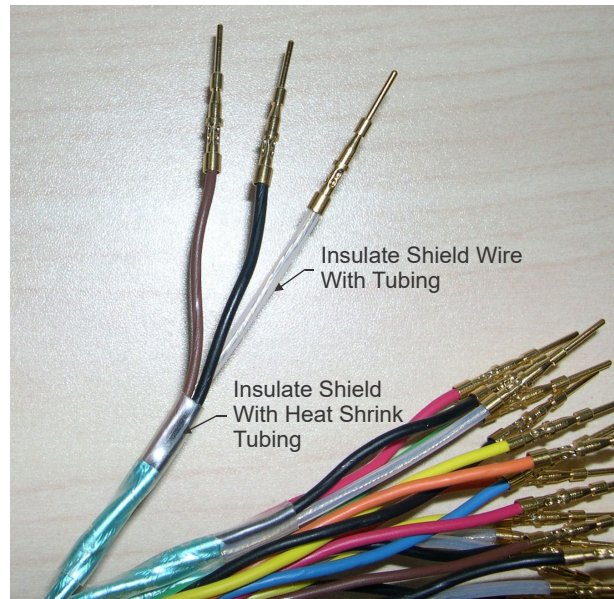
Do not solder the wires into the pin as this will cause the pin to be deformed and it will not fit into the connector.



9. Strip back the plastic and foil shield on each of the eight twisted shielded pairs approximately 5.0 cm (2 inches). Again be sure that you DO NOT cut off the shield.
10. Use 1/16" Teflon tubing on the shield wires to prevent them from shorting to each other. Add a short piece of 1/4" heat shrink tubing at the base of the twisted pair and shield as needed.
11. Strip back the insulation on each of the shielded pair wires by approximately 6 mm (0.25 in.). Insert the wire into the pin's crimp barrel and ensure that it has penetrated correctly and all wire strands are inside the pin. Using the crimping tool, crimp a pin on each wire and shield wire. Squeeze the crimping tool handles firmly until a click is heard. The crimping tool should spring open when released.



Do not solder the wires into the pin as this will cause the pin to be deformed and it will not fit into the connector.



- Repeat step 9 through 12 for each of the wires to be inserted in the dry end connector.



**Before you start inserting pins into the connector, make sure the white plastic sleeve is placed on the connector.**

Insert the pins from the center of the connector and work your way out. This makes it less likely to bend or break the wires off of the pins.

- Insert pins into the unused pins of the connector using the insertion tool (MS24256A20 (DAK20)). The unused pins are X, Y, Z, a, b, c, n, p, and t. This will prevent the potting compound added in step 17 from leaking out the holes. The pin out configuration is shown in Figure 6.
- Insert the pins with wires in the connector using the insertion tool (MS24256A20 (DAK20)). The pin out configuration is shown in Figure 6.
- Slide the cable flair and cable shell over the heat shrink tubing and onto the cable connector. Tighten all pieces hand tight.
- Check the wiring and correct any problems before completing the next step.
- Fill the cable shell and flair fully with DP270 potting compound. The DP270 is supplied in a dual syringe plastic cartridge and EPX applicator. Attach the EPX applicator mixing nozzle to the cartridge and begin dispensing the adhesive using light pressure on the trigger. It should be tack-free after 3 hours. Allow the potting compound to fully cure for 48 hours at 73°F (23°C). It may take longer to cure depending on temperature and humidity.



Wear plastic gloves and eye protection when using the DP270 potting compound. DP270 may cause skin and eye burns.

- Slide the heat shrink tubing up as close to the flair as possible. Using a heat gun, shrink the tubing around the end of the cable.

# Checking the Wiring

After the connector is installed, use a multi-meter to confirm that the connector has been wired properly by performing an end-to-end continuity and adjacent pin isolation check (see Figure 6).

1. Confirm that all pins in the dry end connector are not shorted. Check for  $>2$  Mohms of resistance between each of the dry end pins.
2. Using a 2-inch jumper wire (such as a paper clip) connect pins 1 and 2 of the wet end connector. Confirm that the associated dry end pins are shorted together. The resistance should nominally be 0.033 Ohms per meter of cable conductor at 20°C. For example, a 30 meter cable has a nominal conductor resistance of 1 Ohm at 20°C. The total resistance should be  $0.033 \times 30 \times 2$  conductors = 1.98 Ohms.
3. Move the jumper to pins 1 and 3 of the wet end connector and confirm that pins 1 and 3 are wired properly.
4. Repeat step 3 for each of the remaining pins in the wet end connector. Each time, use pin 1 as the reference and then the other pin will be the pin that has not been tested.